

Anti-KAT5 antibody (340-420 Internal) (STJ96030)

STJ96030

GENERAL INFORMATION

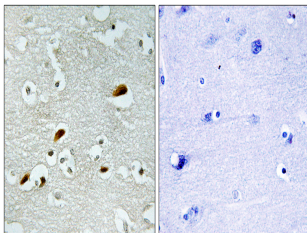
Product Type	Primary antibodies
Short Description	Rabbit polyclonal antibody anti-Histone Acetyltransferase Kat5 (340-420 Internal) is suitable for use in Immunohistochemistry, Immunofluorescence and ELISA research applications.
Applications	IHC-P, IF-P, ELISA
Host/Source	Rabbit
Reactivity	Human, Mouse, Rat

PRODUCT PROPERTIES

Clonality	Polyclonal
Clone ID	
Concentration	1 mg/mL
Conjugation	Unconjugated
Purification	The antibody was affinity-purified from rabbit anti-serum by affinity-chromatography.
Dilution Range	IHC 1:100-1:300 ELISA 1:20000
Formulation	PBS, 50% Glycerol, 0.5% BSA and 0.02% Sodium Azide.
Isotype	IgG
Storage	Store at -20°C for up to 1 year from the date of receipt, and avoid repeat freeze-thaw cycles.
Instruction	

TARGET INFORMATION

Gene ID	10524
Gene Symbol	KAT5
Uniprot ID	KAT5_HUMAN
Immunogen	The antiserum was produced against synthesized peptide derived from human TIP60 at amino acid range 371-420
Immunogen Region	340-420 Internal
Specificity	KAT5 polyclonal antibody (Histone Acetyltransferase Kat5) binds to endogenous Histone Acetyltransferase Kat5 at the amino acid region 340-420 Internal.
Immunogen Sequence	



Immunohistochemistry analysis of paraffin-embedded human brain tissue, using TIP60 Antibody. The picture on the right is blocked with the synthesized peptide.