

Anti-BAZ2A antibody (1250-1330 Internal) (STJ96028)

STJ96028

GENERAL INFORMATION

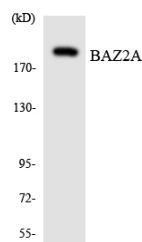
Product Type	Primary antibodies
Short Description	Rabbit polyclonal antibody anti-Bromodomain Adjacent To Zinc Finger Domain Protein 2a (1250-1330 Internal) is suitable for use in Western Blot and ELISA research applications.
Applications	WB, ELISA
Host/Source	Rabbit
Reactivity	Human, Rat, Mouse

PRODUCT PROPERTIES

Clonality	Polyclonal
Clone ID	
Concentration	1 mg/mL
Conjugation	Unconjugated
Purification	The antibody was affinity-purified from rabbit anti-serum by affinity-chromatography.
Dilution Range	WB 1:500-1:2000 ELISA 1:5000
Formulation	PBS, 50% Glycerol, 0.5% BSA and 0.02% Sodium Azide.
Isotype	IgG
Storage Instruction	Store at -20°C for up to 1 year from the date of receipt, and avoid repeat freeze-thaw cycles.

TARGET INFORMATION

Gene ID	11176
Gene Symbol	BAZ2A
Uniprot ID	BAZ2A_HUMAN
Immunogen Region	The antiserum was produced against synthesized peptide derived from human BAZ2A at amino acid range 1281-1330 Internal
Specificity	BAZ2A polyclonal antibody (Bromodomain Adjacent To Zinc Finger Domain Protein 2a) binds to endogenous Bromodomain Adjacent To Zinc Finger Domain Protein 2a at the amino acid region 1250-1330 Internal.
Immunogen Sequence	



Western blot analysis of the lysates from HeLa cells using BAZ2A antibody.

This product is suitable for in-vitro studies under the RESEARCH USE ONLY [RUO] licence. This product must not be used as for diagnostic or other medical purposes.
St John's Laboratory Ltd, Knowledge Dock Business Centre, University Way, London, E16 2RD | Tel: 0208 223 3081