

Anti-TIMP4 antibody (150-230 C-Term) (STJ96026)

STJ96026

GENERAL INFORMATION

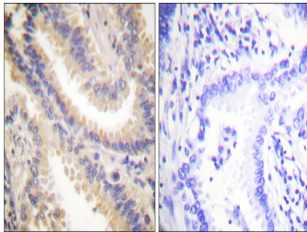
Product Type	Primary antibodies
Short Description	Rabbit polyclonal antibody anti-Metalloproteinase Inhibitor 4 (150-230 C-Term) is suitable for use in Western Blot, Immunohistochemistry, Immunofluorescence and ELISA research applications.
Applications	WB, IHC-P, IF-P, ELISA
Host/Source	Rabbit
Reactivity	Human, Mouse, Rat

PRODUCT PROPERTIES

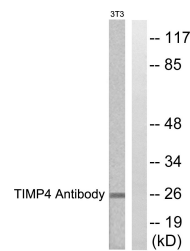
Clonality	Polyclonal
Clone ID	
Concentration	1 mg/mL
Conjugation	Unconjugated
Purification	The antibody was affinity-purified from rabbit anti-serum by affinity-chromatography.
Dilution Range	WB 1:500-1:2000 IHC 1:100-1:300 ELISA 1:20000
Formulation	PBS, 50% Glycerol, 0.5% BSA and 0.02% Sodium Azide.
Isotype	IgG
Storage Instruction	Store at -20°C for up to 1 year from the date of receipt, and avoid repeat freeze-thaw cycles.

TARGET INFORMATION

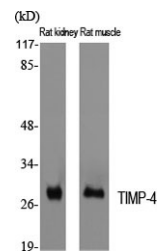
Gene ID	7079
Gene Symbol	TIMP4
Uniprot ID	TIMP4_HUMAN
Immunogen	The antiserum was produced against synthesized peptide derived from human TIMP4 at amino acid range 175-224
Immunogen Region	150-230 C-Term
Specificity	TIMP4 polyclonal antibody (Metalloproteinase Inhibitor 4) binds to endogenous Metalloproteinase Inhibitor 4 at the amino acid region 150-230 C-Term.
Immunogen Sequence	



Immunohistochemistry analysis of paraffin-embedded human lung carcinoma tissue, using TIMP4 Antibody. The picture on the right is blocked with the synthesized peptide.



Western blot analysis of lysates from NIH/3T3 cells, using TIMP4 Antibody. The lane on the right is blocked with the synthesized peptide.



Western blot analysis of various cells using TIMP-4 Polyclonal Antibody diluted at 1:2000. Secondary antibody was diluted at 1:20000