

## Anti-TIMP3 antibody (60-140 Internal) (STJ96025)

STJ96025

### GENERAL INFORMATION

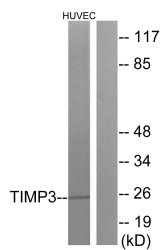
<b>Product Type</b>	Primary antibodies
<b>Short Description</b>	Rabbit polyclonal antibody anti-Metalloproteinase Inhibitor 3 (60-140 Internal) is suitable for use in Western Blot and ELISA research applications.
<b>Applications</b>	WB, ELISA
<b>Host/Source</b>	Rabbit
<b>Reactivity</b>	Human, Mouse, Rat

### PRODUCT PROPERTIES

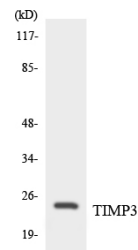
<b>Clonality</b>	Polyclonal
<b>Clone ID</b>	
<b>Concentration</b>	1 mg/mL
<b>Conjugation</b>	Unconjugated
<b>Purification</b>	The antibody was affinity-purified from rabbit anti-serum by affinity-chromatography.
<b>Dilution Range</b>	WB 1:500-1:2000 ELISA 1:10000
<b>Formulation</b>	PBS, 50% Glycerol, 0.5% BSA and 0.02% Sodium Azide.
<b>Isotype</b>	IgG
<b>Storage</b>	Store at -20°C for up to 1 year from the date of receipt, and avoid repeat freeze-thaw cycles.
<b>Instruction</b>	

### TARGET INFORMATION

<b>Gene ID</b>	7078
<b>Gene Symbol</b>	TIMP3
<b>Uniprot ID</b>	TIMP3_HUMAN
<b>Immunogen</b>	The antiserum was produced against synthesized peptide derived from human TIMP3 at amino acid range 91-140
<b>Immunogen Region</b>	60-140 Internal
<b>Specificity</b>	TIMP3 polyclonal antibody (Metalloproteinase Inhibitor 3) binds to endogenous Metalloproteinase Inhibitor 3 at the amino acid region 60-140 Internal.
<b>Immunogen Sequence</b>	



Western blot analysis of lysates from HUVEC cells, using TIMP3 Antibody. The lane on the right is blocked with the synthesized peptide.



Western blot analysis of the lysates from HepG2 cells using TIMP3 antibody.



Western blot analysis of various cells using TIMP-3 Polyclonal Antibody diluted at 1: 1000. Secondary antibody was diluted at 1:20000