

Anti-TIGD1 antibody (220-300 Internal) (STJ96020)

STJ96020

GENERAL INFORMATION

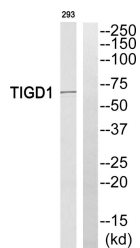
Product Type	Primary antibodies
Short Description	Rabbit polyclonal antibody anti-Tigger Transposable Element-Derived Protein 1 (220-300 Internal) is suitable for use in Western Blot and ELISA research applications.
Applications	WB, ELISA
Host/Source	Rabbit
Reactivity	Human, Rat, Mouse

PRODUCT PROPERTIES

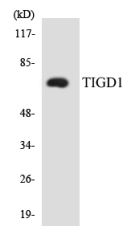
Clonality	Polyclonal
Clone ID	
Concentration	1 mg/mL
Conjugation	Unconjugated
Purification	The antibody was affinity-purified from rabbit anti-serum by affinity-chromatography.
Dilution Range	WB 1:500-1:2000 ELISA 1:10000
Formulation	PBS, 50% Glycerol, 0.5% BSA and 0.02% Sodium Azide.
Isotype	IgG
Storage Instruction	Store at -20°C for up to 1 year from the date of receipt, and avoid repeat freeze-thaw cycles.

TARGET INFORMATION

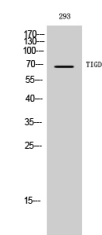
Gene ID	200765
Gene Symbol	TIGD1
Uniprot ID	TIGD1_HUMAN
Immunogen	The antiserum was produced against synthesized peptide derived from human TIGD1 at amino acid range 251-300
Immunogen Region	220-300 Internal
Specificity	TIGD1 polyclonal antibody (Tigger Transposable Element-Derived Protein 1) binds to endogenous Tigger Transposable Element-Derived Protein 1 at the amino acid region 220-300 Internal.
Immunogen Sequence	



Western blot analysis of TIGD1 Antibody. The lane on the right is blocked with the TIGD1 peptide.



Western blot analysis of the lysates from HeLa cells using TIGD1 antibody.



Western blot analysis of 293 cells using TIGD1 Polyclonal Antibody diluted at 1: 500. Secondary antibody was diluted at 1:20000 cells nucleus extracted by Minute TM Cytoplasmic and Nuclear Fractionation kit (SC-003, Inventibiotech, MN, USA).

This product is suitable for in-vitro studies under the RESEARCH USE ONLY [RUO] licence. This product must not be used as for diagnostic or other medical purposes.
St John's Laboratory Ltd, Knowledge Dock Business Centre, University Way, London, E16 2RD | Tel: 0208 223 3081