

Anti-TIEG-1/2 antibody (360-440 C-Term) (STJ96017)

STJ96017

GENERAL INFORMATION

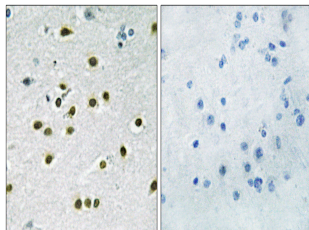
Product Type	Primary antibodies
Short Description	Rabbit polyclonal antibody anti-Krueppel-like factor 10 and Krueppel-like factor 11 (360-440 C-Term) is suitable for use in Immunohistochemistry, Immunofluorescence and ELISA research applications.
Applications	IHC-P, IF-P, ELISA
Host/Source	Rabbit
Reactivity	Human, Mouse, Rat

PRODUCT PROPERTIES

Clonality	Polyclonal
Clone ID	
Concentration	1 mg/mL
Conjugation	Unconjugated
Purification	The antibody was affinity-purified from rabbit anti-serum by affinity-chromatography.
Dilution	IHC 1:100-1:300
Range	ELISA 1:5000
Formulation	PBS, 50% Glycerol, 0.5% BSA and 0.02% Sodium Azide.
Isotype	IgG
Storage	Store at -20°C for up to 1 year from the date of receipt, and avoid repeat freeze-thaw cycles.
Instruction	

TARGET INFORMATION

Gene ID	8462
	7071
Gene Symbol	KLF11
	KLF10
Uniprot ID	KLF11_HUMAN
	KLF10_HUMAN
Immunogen	The antiserum was produced against synthesized peptide derived from human KLF10/11 at amino acid range 391-440
Immunogen Region	360-440 C-Term
Specificity	TIEG-1/2 polyclonal antibody (Krueppel-like factor 10 and Krueppel-like factor 11) binds to endogenous Krueppel-like factor 10 and Krueppel-like factor 11 at the amino acid region 360-440 C-Term.
Immunogen Sequence	



Immunohistochemistry analysis of paraffin-embedded human brain tissue, using KLF10/11 Antibody. The picture on the right is blocked with the synthesized peptide.