

Anti-GPBAR1 antibody (30-110 N-Term) (STJ96001)

STJ96001

GENERAL INFORMATION

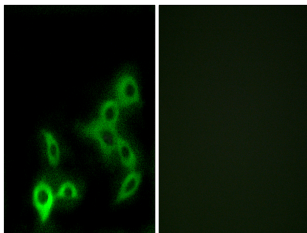
Product Type	Primary antibodies
Short Description	Rabbit polyclonal antibody anti-G-Protein Coupled Bile Acid Receptor 1 (30-110 N-Term) is suitable for use in Immunofluorescence, Immunocytochemistry and ELISA research applications.
Applications	IF, ICC, ELISA
Host/Source	Rabbit
Reactivity	Human, Rat, Mouse

PRODUCT PROPERTIES

Clonality	Polyclonal
Clone ID	
Concentration	1 mg/mL
Conjugation	Unconjugated
Purification	The antibody was affinity-purified from rabbit anti-serum by affinity-chromatography.
Dilution Range	IF 1:200-1:1000 ELISA 1:10000
Formulation	PBS, 50% Glycerol, 0.5% BSA and 0.02% Sodium Azide.
Isotype	IgG
Storage Instruction	Store at -20°C for up to 1 year from the date of receipt, and avoid repeat freeze-thaw cycles.

TARGET INFORMATION

Gene ID	151306
Gene Symbol	GPBAR1
Uniprot ID	GPBAR_HUMAN
Immunogen	The antiserum was produced against synthesized peptide derived from human GPBAR at amino acid range 11-60
Immunogen Region	30-110 N-Term
Specificity	GPBAR1 polyclonal antibody (G-Protein Coupled Bile Acid Receptor 1) binds to endogenous G-Protein Coupled Bile Acid Receptor 1 at the amino acid region 30-110 N-Term.
Immunogen Sequence	



Immunofluorescence analysis of LOVO cells, using GPBAR1 Antibody. The picture on the right is blocked with the synthesized peptide.