

## Anti-TGFB1 antibody (310-390 C-Term) (STJ95997)

STJ95997

### GENERAL INFORMATION

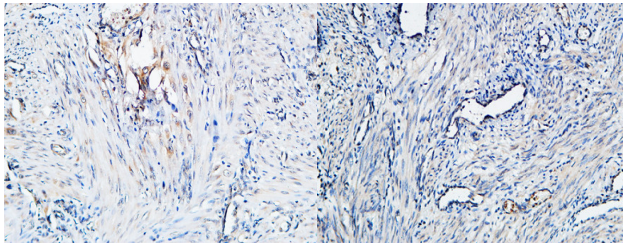
<b>Product Type</b>	Primary antibodies
<b>Short Description</b>	Rabbit polyclonal antibody anti-Transforming Growth Factor Beta-1 Proprotein Cleaved Into-Latency-Associated Peptide (310-390 C-Term) is suitable for use in Western Blot, Immunohistochemistry, Immunofluorescence, Immunocytochemistry and ELISA research
<b>Applications</b>	WB, IHC-P, IF, ICC, ELISA
<b>Host/Source</b>	Rabbit
<b>Reactivity</b>	Human, Mouse, Rat

### PRODUCT PROPERTIES

<b>Clonality</b>	Polyclonal
<b>Clone ID</b>	
<b>Concentration</b>	1 mg/mL
<b>Conjugation</b>	Unconjugated
<b>Purification</b>	The antibody was affinity-purified from rabbit anti-serum by affinity-chromatography.
<b>Dilution</b>	WB 1:500-1:2000
<b>Range</b>	IHC 1:100-1:300 IF 1:200-1:1000 ELISA 1:20000
<b>Formulation</b>	PBS, 50% Glycerol, 0.5% BSA and 0.02% Sodium Azide.
<b>Isotype</b>	IgG
<b>Storage Instruction</b>	Store at -20°C for up to 1 year from the date of receipt, and avoid repeat freeze-thaw cycles.

### TARGET INFORMATION

<b>Gene ID</b>	7040
<b>Gene Symbol</b>	TGFB1
<b>Uniprot ID</b>	TGFB1_HUMAN
<b>Immunogen</b>	The antiserum was produced against synthesized peptide derived from human TGF beta1 at amino acid range 336-385
<b>Immunogen Region</b>	310-390 C-Term
<b>Specificity</b>	TGFB1 polyclonal antibody (Transforming Growth Factor Beta-1 Proprotein Cleaved Into-Latency-Associated Peptide) binds to endogenous Transforming Growth Factor Beta-1 Proprotein Cleaved Into-Latency-Associated Peptide at the amino acid region 310-390
<b>Immunogen Sequence</b>	

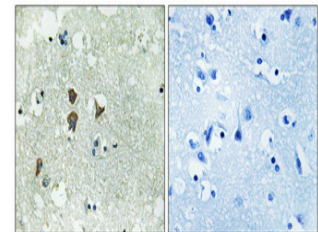


Immunohistochemical analysis of paraffin-embedded Human Endometrium. 1. Antibody was diluted at 1:200 (4°C overnight). 2. High-pressure and temperature EDTA, pH8.0 was used for antigen retrieval. 3. Secondary antibody was diluted at 1:200 (room temperature, 30min).

Immunohistochemical analysis of paraffin-embedded Human Endometrium. 1. Antibody was diluted at 1:200 (4°C overnight). 2. High-pressure and temperature EDTA, pH8.0 was used for antigen retrieval. 3. Secondary antibody was diluted at 1:200 (room temperature, 30min).



Western blot analysis of MCF7 cells using TGF Beta 1 Polyclonal Antibody diluted at 1: 2000



Immunohistochemical analysis of paraffin-embedded Human brain. Antibody was diluted at 1:100 (4°C overnight). High-pressure and temperature Tris-EDTA, pH8.0 was used for antigen retrieval. Negative control (right) obtained from antibody was pre-absorbed by immunogen peptide.

This product is suitable for in-vitro studies under the RESEARCH USE ONLY [RUO] licence. This product must not be used as for diagnostic or other medical purposes.  
St John's Laboratory Ltd, Knowledge Dock Business Centre, University Way, London, E16 2RD | Tel: 0208 223 3081