

Anti-TGFBR1 antibody (100-180) (STJ95992)

STJ95992

GENERAL INFORMATION

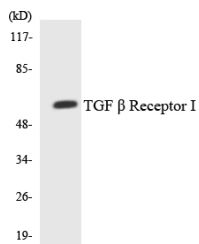
Product Type	Primary antibodies
Short Description	Rabbit polyclonal antibody anti-Tgf-Beta Receptor Type-1 (100-180) is suitable for use in Western Blot, Immunofluorescence, Immunocytochemistry and ELISA research applications.
Applications	WB, IF, ICC, ELISA
Host/Source	Rabbit
Reactivity	Human, Mouse, Rat

PRODUCT PROPERTIES

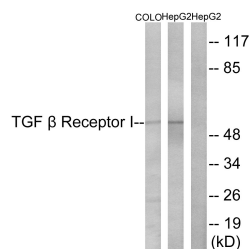
Clonality	Polyclonal
Clone ID	
Concentration	1 mg/mL
Conjugation	Unconjugated
Purification	The antibody was affinity-purified from rabbit anti-serum by affinity-chromatography.
Dilution Range	WB 1:500-1:2000 IF 1:200-1:1000 ELISA 1:10000
Formulation	PBS, 50% Glycerol, 0.5% BSA and 0.02% Sodium Azide.
Isotype	IgG
Storage Instruction	Store at -20°C for up to 1 year from the date of receipt, and avoid repeat freeze-thaw cycles.

TARGET INFORMATION

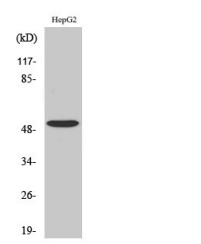
Gene ID	7046
Gene Symbol	TGFBR1
Uniprot ID	TGFR1_HUMAN
Immunogen	The antiserum was produced against synthesized peptide derived from human TGF beta Receptor I at amino acid range 131-180
Immunogen Region	100-180
Specificity	TGFBR1 polyclonal antibody (Tgf-Beta Receptor Type-1) binds to endogenous Tgf-Beta Receptor Type-1 at the amino acid region 100-180.
Immunogen Sequence	



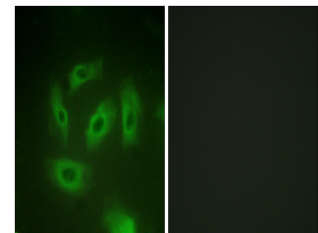
Western blot analysis of the lysates from HeLa cells using TGF Beta Receptor I antibody.



Western blot analysis of lysates from HepG2 and COLO205 cells, using TGF beta Receptor I Antibody. The lane on the right is blocked with the synthesized peptide.



Western blot analysis of COLO205 cells using TGF Beta RI Polyclonal Antibody diluted at 1: 500



Immunofluorescence analysis of HeLa cells, using TGF beta Receptor I Antibody. The picture on the right is blocked with the synthesized peptide.

This product is suitable for in-vitro studies under the RESEARCH USE ONLY [RUO] licence. This product must not be used as for diagnostic or other medical purposes.
St John's Laboratory Ltd, Knowledge Dock Business Centre, University Way, London, E16 2RD | Tel: 0208 223 3081