

Anti-TGFA antibody (80-160 C-Term) (STJ95991)

STJ95991

GENERAL INFORMATION

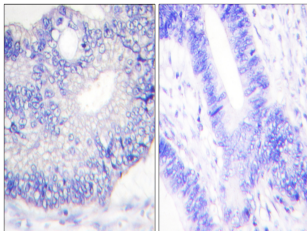
Product Type	Primary antibodies
Short Description	Rabbit polyclonal antibody anti-Protransforming Growth Factor Alpha Cleaved Into-Transforming Growth Factor Alpha (80-160 C-Term) is suitable for use in Western Blot, Immunohistochemistry, Immunofluorescence and ELISA research applications.
Applications	WB, IHC-P, IF-P, ELISA
Host/Source	Rabbit
Reactivity	Human, Mouse, Rat, Monkey

PRODUCT PROPERTIES

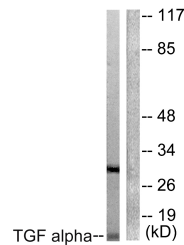
Clonality	Polyclonal
Clone ID	
Concentration	1 mg/mL
Conjugation	Unconjugated
Purification	The antibody was affinity-purified from rabbit anti-serum by affinity-chromatography.
Dilution Range	WB 1:500-1:2000 IHC 1:100-1:300 ELISA 1:10000
Formulation	PBS, 50% Glycerol, 0.5% BSA and 0.02% Sodium Azide.
Isotype	IgG
Storage Instruction	Store at -20°C for up to 1 year from the date of receipt, and avoid repeat freeze-thaw cycles.

TARGET INFORMATION

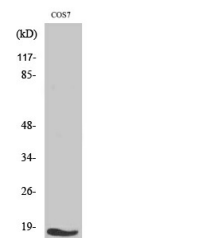
Gene ID	7039
Gene Symbol	TGFA
Uniprot ID	TGFA_HUMAN
Immunogen	The antiserum was produced against synthesized peptide derived from human TGF alpha at amino acid range 111-160
Immunogen Region	80-160 C-Term
Specificity	TGFA polyclonal antibody (Protransforming Growth Factor Alpha Cleaved Into-Transforming Growth Factor Alpha) binds to endogenous Protransforming Growth Factor Alpha Cleaved Into-Transforming Growth Factor Alpha at the amino acid region 80-160 C-Term.
Immunogen Sequence	



Immunohistochemistry analysis of paraffin-embedded human colon carcinoma tissue, using TGF alpha Antibody. The picture on the right is blocked with the synthesized peptide.



Western blot analysis of lysates from COS7 cells, using TGF alpha Antibody. The lane on the right is blocked with the synthesized peptide.



Western blot analysis of various cells using TGF Alpha Polyclonal Antibody

This product is suitable for in-vitro studies under the RESEARCH USE ONLY [RUO] licence. This product must not be used as for diagnostic or other medical purposes.
St John's Laboratory Ltd, Knowledge Dock Business Centre, University Way, London, E16 2RD | Tel: 0208 223 3081