

Anti-GTF2E2 antibody (120-200 Internal) (STJ95981)

STJ95981

GENERAL INFORMATION

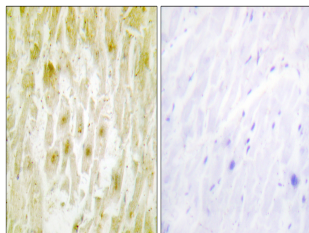
Product Type	Primary antibodies
Short Description	Rabbit polyclonal antibody anti-Transcription Initiation Factor IIE Subunit Beta (120-200 Internal) is suitable for use in Western Blot, Immunohistochemistry, Immunofluorescence and ELISA research applications.
Applications	WB, IHC-P, IF-P, ELISA
Host/Source	Rabbit
Reactivity	Human, Mouse

PRODUCT PROPERTIES

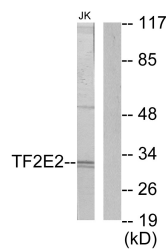
Clonality	Polyclonal
Clone ID	
Concentration	1 mg/mL
Conjugation	Unconjugated
Purification	The antibody was affinity-purified from rabbit anti-serum by affinity-chromatography.
Dilution Range	WB 1:500-1:2000 IHC 1:100-1:300 ELISA 1:20000
Formulation	PBS, 50% Glycerol, 0.5% BSA and 0.02% Sodium Azide.
Isotype	IgG
Storage Instruction	Store at -20°C for up to 1 year from the date of receipt, and avoid repeat freeze-thaw cycles.

TARGET INFORMATION

Gene ID	2961
Gene Symbol	GTF2E2
Uniprot ID	T2EB_HUMAN
Immunogen	The antiserum was produced against synthesized peptide derived from human TF2E2 at amino acid range 151-200
Immunogen Region	120-200 Internal
Specificity	GTF2E2 polyclonal antibody (Transcription Initiation Factor IIE Subunit Beta) binds to endogenous Transcription Initiation Factor IIE Subunit Beta at the amino acid region 120-200 Internal.
Immunogen Sequence	



Immunohistochemistry analysis of paraffin-embedded human heart tissue, using TF2E2 Antibody. The picture on the right is blocked with the synthesized peptide.



Western blot analysis of lysates from Jurkat cells, using TF2E2 Antibody. The lane on the right is blocked with the synthesized peptide.



Western blot analysis of various cells using TFIE-Beta Polyclonal Antibody cells nucleus extracted by Minute™ Cytoplasmic and Nuclear Fractionation kit (SC-003, Inventiotech, MN, USA).

This product is suitable for in-vitro studies under the RESEARCH USE ONLY [RUO] licence. This product must not be used as for diagnostic or other medical purposes.
St John's Laboratory Ltd, Knowledge Dock Business Centre, University Way, London, E16 2RD | Tel: 0208 223 3081