

## Anti-TSPAN8 antibody (70-150 Internal) (STJ95974)

STJ95974

### GENERAL INFORMATION

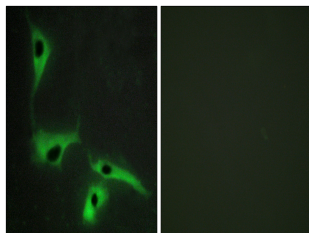
<b>Product Type</b>	Primary antibodies
<b>Short Description</b>	Rabbit polyclonal antibody anti-Tetraspanin-8 (70-150 Internal) is suitable for use in Western Blot, Immunohistochemistry, Immunofluorescence, Immunocytochemistry and ELISA research applications.
<b>Applications</b>	WB, IHC-P, IF, ICC, ELISA
<b>Host/Source</b>	Rabbit
<b>Reactivity</b>	Human, Rat, Mouse

### PRODUCT PROPERTIES

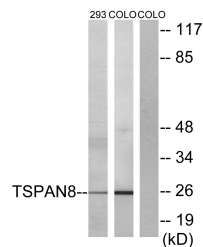
<b>Clonality</b>	Polyclonal
<b>Clone ID</b>	
<b>Concentration</b>	1 mg/mL
<b>Conjugation</b>	Unconjugated
<b>Purification</b>	The antibody was affinity-purified from rabbit anti-serum by affinity-chromatography.
<b>Dilution Range</b>	WB 1:500-1:2000 IHC 1:100-1:300 IF 1:200-1:1000 ELISA 1:20000
<b>Formulation</b>	PBS, 50% Glycerol, 0.5% BSA and 0.02% Sodium Azide.
<b>Isotype</b>	IgG
<b>Storage Instruction</b>	Store at -20°C for up to 1 year from the date of receipt, and avoid repeat freeze-thaw cycles.

### TARGET INFORMATION

<b>Gene ID</b>	7103
<b>Gene Symbol</b>	TSPAN8
<b>Uniprot ID</b>	TSN8_HUMAN
<b>Immunogen</b>	The antiserum was produced against synthesized peptide derived from human TSPAN8 at amino acid range 96-145
<b>Immunogen Region</b>	70-150 Internal
<b>Specificity</b>	TSPAN8 polyclonal antibody (Tetraspanin-8) binds to endogenous Tetraspanin-8 at the amino acid region 70-150 Internal.
<b>Immunogen Sequence</b>	



Immunofluorescence analysis of HeLa cells, using TSPAN8 Antibody. The picture on the right is blocked with the synthesized peptide.



Western blot analysis of lysates from 293 and COLO cells, using TSPAN8 Antibody. The lane on the right is blocked with the synthesized peptide.



Western blot analysis of various cells using Tetraspanin-8 Polyclonal Antibody diluted at 1: 1000