

Anti-**TESK2** antibody (180-260 Internal) (STJ95973)

STJ95973

GENERAL INFORMATION

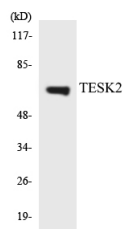
Product Type	Primary antibodies
Short Description	Rabbit polyclonal antibody anti-Dual Specificity Testis-Specific Protein Kinase 2 (180-260 Internal) is suitable for use in Western Blot and ELISA research applications.
Applications	WB, ELISA
Host/Source	Rabbit
Reactivity	Human, Mouse, Rat

PRODUCT PROPERTIES

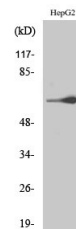
Clonality	Polyclonal
Clone ID	
Concentration	1 mg/mL
Conjugation	Unconjugated
Purification	The antibody was affinity-purified from rabbit anti-serum by affinity-chromatography.
Dilution Range	WB 1:500-1:2000 ELISA 1:20000
Formulation	PBS, 50% Glycerol, 0.5% BSA and 0.02% Sodium Azide.
Isotype	IgG
Storage Instruction	Store at -20°C for up to 1 year from the date of receipt, and avoid repeat freeze-thaw cycles.

TARGET INFORMATION

Gene ID	10420
Gene Symbol	TESK2
Uniprot ID	TESK2_HUMAN
Immunogen	The antiserum was produced against synthesized peptide derived from human TESK2 at amino acid range 201-250
Immunogen Region	180-260 Internal
Specificity	TESK2 polyclonal antibody (Dual Specificity Testis-Specific Protein Kinase 2) binds to endogenous Dual Specificity Testis-Specific Protein Kinase 2 at the amino acid region 180-260 Internal.
Immunogen Sequence	



Western blot analysis of the lysates from K562 cells using TESK2 antibody.



Western blot analysis of various cells using TESK2 Polyclonal Antibody

This product is suitable for in-vitro studies under the RESEARCH USE ONLY [RUO] licence. This product must not be used as for diagnostic or other medical purposes.
 St John's Laboratory Ltd, Knowledge Dock Business Centre, University Way, London, E16 2RD | Tel: 0208 223 3081