

Anti-**TESK1** antibody (150-230 Internal) (STJ95972)

STJ95972

GENERAL INFORMATION

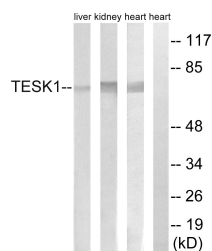
Product Type	Primary antibodies
Short Description	Rabbit polyclonal antibody anti-Dual Specificity Testis-Specific Protein Kinase 1 (150-230 Internal) is suitable for use in Western Blot and ELISA research applications.
Applications	WB, ELISA
Host/Source	Rabbit
Reactivity	Human, Mouse, Rat

PRODUCT PROPERTIES

Clonality	Polyclonal
Clone ID	
Concentration	1 mg/mL
Conjugation	Unconjugated
Purification	The antibody was affinity-purified from rabbit anti-serum by affinity-chromatography.
Dilution Range	WB 1:500-1:2000 ELISA 1:40000
Formulation	PBS, 50% Glycerol, 0.5% BSA and 0.02% Sodium Azide.
Isotype	IgG
Storage Instruction	Store at -20°C for up to 1 year from the date of receipt, and avoid repeat freeze-thaw cycles.

TARGET INFORMATION

Gene ID	7016
Gene Symbol	TESK1
Uniprot ID	TESK1_HUMAN
Immunogen	The antiserum was produced against synthesized peptide derived from human TESK1 at amino acid range 181-230
Immunogen Region	150-230 Internal
Specificity	TESK1 polyclonal antibody (Dual Specificity Testis-Specific Protein Kinase 1) binds to endogenous Dual Specificity Testis-Specific Protein Kinase 1 at the amino acid region 150-230 Internal.
Immunogen Sequence	



Western blot analysis of lysates from rat heart, rat kidney, and rat liver cells, using TESK1 Antibody. The lane on the right is blocked with the synthesized peptide.