

## Anti-TERT antibody (770-850) (STJ95970)

STJ95970

### GENERAL INFORMATION

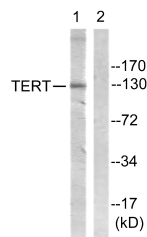
<b>Product Type</b>	Primary antibodies
<b>Short Description</b>	Rabbit polyclonal antibody anti-Telomerase Reverse Transcriptase (770-850) is suitable for use in Western Blot and ELISA research applications.
<b>Applications</b>	WB, ELISA
<b>Host/Source</b>	Rabbit
<b>Reactivity</b>	Human, Rat, Mouse

### PRODUCT PROPERTIES

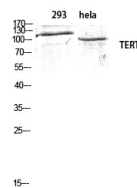
<b>Clonality</b>	Polyclonal
<b>Clone ID</b>	
<b>Concentration</b>	1 mg/mL
<b>Conjugation</b>	Unconjugated
<b>Purification</b>	The antibody was affinity-purified from rabbit anti-serum by affinity-chromatography.
<b>Dilution Range</b>	WB 1:500-1:2000 ELISA 1:20000
<b>Formulation</b>	PBS, 50% Glycerol, 0.5% BSA and 0.02% Sodium Azide.
<b>Isotype</b>	IgG
<b>Storage</b>	Store at -20°C for up to 1 year from the date of receipt, and avoid repeat freeze-thaw cycles.
<b>Instruction</b>	

### TARGET INFORMATION

<b>Gene ID</b>	7015
<b>Gene Symbol</b>	TERT
<b>Uniprot ID</b>	TERT_HUMAN
<b>Immunogen</b>	The antiserum was produced against synthesized peptide derived from human Telomerase at amino acid range 796-845
<b>Immunogen Region</b>	770-850
<b>Specificity</b>	TERT polyclonal antibody (Telomerase Reverse Transcriptase) binds to endogenous Telomerase Reverse Transcriptase at the amino acid region 770-850.
<b>Immunogen Sequence</b>	



Western blot analysis of lysates from Jurkat cells, using Telomerase Antibody. The lane on the right is blocked with the synthesized peptide.



Western blot analysis of 293 HeLa cells using TERT Polyclonal Antibody diluted at 1: 1000