

Anti-ETV6 antibody (200-280) (STJ95965)

STJ95965

GENERAL INFORMATION

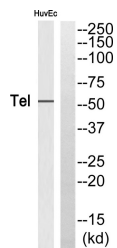
Product Type	Primary antibodies
Short Description	Rabbit polyclonal antibody anti-Transcription Factor Etv6 (200-280) is suitable for use in Western Blot and ELISA research applications.
Applications	WB, ELISA
Host/Source	Rabbit
Reactivity	Human, Rat, Mouse

PRODUCT PROPERTIES

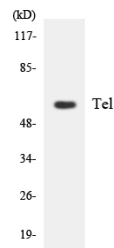
Clonality	Polyclonal
Clone ID	
Concentration	1 mg/mL
Conjugation	Unconjugated
Purification	The antibody was affinity-purified from rabbit anti-serum by affinity-chromatography.
Dilution Range	WB 1:500-1:2000 ELISA 1:10000
Formulation	PBS, 50% Glycerol, 0.5% BSA and 0.02% Sodium Azide.
Isotype	IgG
Storage Instruction	Store at -20°C for up to 1 year from the date of receipt, and avoid repeat freeze-thaw cycles.

TARGET INFORMATION

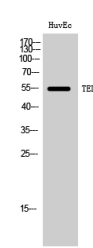
Gene ID	2120
Gene Symbol	ETV6
Uniprot ID	ETV6_HUMAN
Immunogen	The antiserum was produced against synthesized peptide derived from human Tel at amino acid range 223-272
Immunogen Region	200-280
Specificity	ETV6 polyclonal antibody (Transcription Factor Etv6) binds to endogenous Transcription Factor Etv6 at the amino acid region 200-280.
Immunogen Sequence	



Western blot analysis of Tel Antibody. The lane on the right is blocked with the Tel peptide.



Western blot analysis of the lysates from HeLa cells using Tel antibody.



Western blot analysis of HuvEc cells using TEL Polyclonal Antibody

This product is suitable for in-vitro studies under the RESEARCH USE ONLY [RUO] licence. This product must not be used as for diagnostic or other medical purposes.
St John's Laboratory Ltd, Knowledge Dock Business Centre, University Way, London, E16 2RD | Tel: 0208 223 3081