

Anti-SERINC2 antibody (310-390 C-Term) (STJ95957)

STJ95957

GENERAL INFORMATION

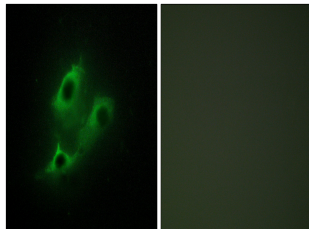
Product Type	Primary antibodies
Short Description	Rabbit polyclonal antibody anti-Serine Incorporator 2 (310-390 C-Term) is suitable for use in Western Blot, Immunohistochemistry, Immunofluorescence, Immunocytochemistry and ELISA research applications.
Applications	WB, IHC-P, IF, ICC, ELISA
Host/Source	Rabbit
Reactivity	Human, Mouse, Rat

PRODUCT PROPERTIES

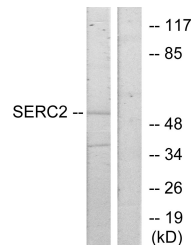
Clonality	Polyclonal
Clone ID	
Concentration	1 mg/mL
Conjugation	Unconjugated
Purification	The antibody was affinity-purified from rabbit anti-serum by affinity-chromatography.
Dilution Range	WB 1:500-1:2000 IHC 1:100-1:300 IF 1:200-1:1000 ELISA 1:40000
Formulation	PBS, 50% Glycerol, 0.5% BSA and 0.02% Sodium Azide.
Isotype	IgG
Storage Instruction	Store at -20°C for up to 1 year from the date of receipt, and avoid repeat freeze-thaw cycles.

TARGET INFORMATION

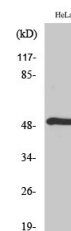
Gene ID	347735
Gene Symbol	SERINC2
Uniprot ID	SERC2_HUMAN
Immunogen	The antiserum was produced against synthesized peptide derived from human SERC2 at amino acid range 341-390
Immunogen Region	310-390 C-Term
Specificity	SERINC2 polyclonal antibody (Serine Incorporator 2) binds to endogenous Serine Incorporator 2 at the amino acid region 310-390 C-Term.
Immunogen Sequence	



Immunofluorescence analysis of NIH/3T3 cells, using SERC2 Antibody. The picture on the right is blocked with the synthesized peptide.



Western blot analysis of lysates from HeLa cells, using SERC2 Antibody. The lane on the right is blocked with the synthesized peptide.



Western blot analysis of various cells using TDE2L Polyclonal Antibody

This product is suitable for in-vitro studies under the RESEARCH USE ONLY [RUO] licence. This product must not be used as for diagnostic or other medical purposes.
St John's Laboratory Ltd, Knowledge Dock Business Centre, University Way, London, E16 2RD | Tel: 0208 223 3081