

Anti-PHLDA1 antibody (240-320 C-Term) (STJ95955)

STJ95955

GENERAL INFORMATION

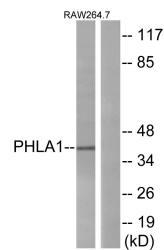
Product Type	Primary antibodies
Short Description	Rabbit polyclonal antibody anti-Pleckstrin Homology-Like Domain Family A Member 1 (240-320 C-Term) is suitable for use in Western Blot and ELISA research applications.
Applications	WB, ELISA
Host/Source	Rabbit
Reactivity	Human, Mouse, Rat

PRODUCT PROPERTIES

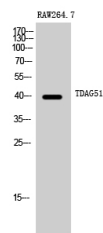
Clonality	Polyclonal
Clone ID	
Concentration	1 mg/mL
Conjugation	Unconjugated
Purification	The antibody was affinity-purified from rabbit anti-serum by affinity-chromatography.
Dilution	WB 1:500-1:2000
Range	ELISA 1:10000
Formulation	PBS, 50% Glycerol, 0.5% BSA and 0.02% Sodium Azide.
Isotype	IgG
Storage	Store at -20°C for up to 1 year from the date of receipt, and avoid repeat freeze-thaw cycles.
Instruction	

TARGET INFORMATION

Gene ID	22822
Gene Symbol	PHLDA1
Uniprot ID	PHLA1_HUMAN
Immunogen	The antiserum was produced against synthesized peptide derived from human PHLA1 at amino acid range 271-320
Immunogen Region	240-320 C-Term
Specificity	PHLDA1 polyclonal antibody (Pleckstrin Homology-Like Domain Family A Member 1) binds to endogenous Pleckstrin Homology-Like Domain Family A Member 1 at the amino acid region 240-320 C-Term.
Immunogen Sequence	



Western blot analysis of lysates from RAW264.7 cells, using PHLA1 Antibody. The lane on the right is blocked with the synthesized peptide.



Western blot analysis of RAW264.7 cells using TDAGS1 Polyclonal Antibody