

## Anti-TRBC1 antibody (Internal) (STJ95953)

STJ95953

### GENERAL INFORMATION

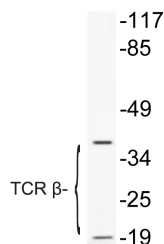
<b>Product Type</b>	Primary antibodies
<b>Short Description</b>	Rabbit polyclonal antibody anti-T Cell Receptor Beta Constant 1 (Internal) is suitable for use in Western Blot and ELISA research applications.
<b>Applications</b>	WB, ELISA
<b>Host/Source</b>	Rabbit
<b>Reactivity</b>	Human, Rat, Mouse

### PRODUCT PROPERTIES

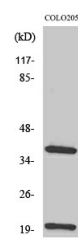
<b>Clonality</b>	Polyclonal
<b>Clone ID</b>	
<b>Concentration</b>	1 mg/mL
<b>Conjugation</b>	Unconjugated
<b>Purification</b>	The antibody was affinity-purified from rabbit anti-serum by affinity-chromatography.
<b>Dilution Range</b>	WB 1:500-1:2000 ELISA 1:10000
<b>Formulation</b>	PBS, 50% Glycerol, 0.5% BSA and 0.02% Sodium Azide.
<b>Isotype</b>	IgG
<b>Storage</b>	Store at -20°C for up to 1 year from the date of receipt, and avoid repeat freeze-thaw cycles.
<b>Instruction</b>	

### TARGET INFORMATION

<b>Gene ID</b>	NA
<b>Gene Symbol</b>	TRBC1
<b>Uniprot ID</b>	TRBC1_HUMAN
<b>Immunogen</b>	The antiserum was produced against synthesized peptide derived from human TCR beta at amino acid range 66-115
<b>Immunogen Region</b>	Internal
<b>Specificity</b>	TRBC1 polyclonal antibody (T Cell Receptor Beta Constant 1) binds to endogenous T Cell Receptor Beta Constant 1 at the amino acid region Internal.
<b>Immunogen Sequence</b>	



Western blot analysis of lysate from COLO205 cells treated with Forskolin, using TCR Beta antibody.



Western blot analysis of various cells using TCR Beta Polyclonal Antibody

This product is suitable for in-vitro studies under the RESEARCH USE ONLY [RUO] licence. This product must not be used as for diagnostic or other medical purposes.  
St John's Laboratory Ltd, Knowledge Dock Business Centre, University Way, London, E16 2RD | Tel: 0208 223 3081