

Anti-CCT8 antibody (330-410 Internal) (STJ95952)

STJ95952

GENERAL INFORMATION

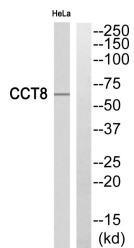
Product Type	Primary antibodies
Short Description	Rabbit polyclonal antibody anti-T-Complex Protein 1 Subunit Theta (330-410 Internal) is suitable for use in Western Blot and ELISA research applications.
Applications	WB, ELISA
Host/Source	Rabbit
Reactivity	Human, Mouse

PRODUCT PROPERTIES

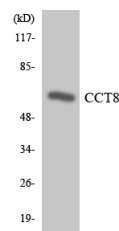
Clonality	Polyclonal
Clone ID	
Concentration	1 mg/mL
Conjugation	Unconjugated
Purification	The antibody was affinity-purified from rabbit anti-serum by affinity-chromatography.
Dilution Range	WB 1:500-1:2000 ELISA 1:5000
Formulation	PBS, 50% Glycerol, 0.5% BSA and 0.02% Sodium Azide.
Isotype	IgG
Storage Instruction	Store at -20°C for up to 1 year from the date of receipt, and avoid repeat freeze-thaw cycles.

TARGET INFORMATION

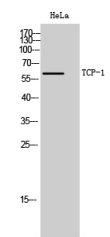
Gene ID	10694
Gene Symbol	CCT8
Uniprot ID	TCPQ_HUMAN
Immunogen	The antiserum was produced against synthesized peptide derived from human CCT8 at amino acid range 361-410
Immunogen Region	330-410 Internal
Specificity	CCT8 polyclonal antibody (T-Complex Protein 1 Subunit Theta) binds to endogenous T-Complex Protein 1 Subunit Theta at the amino acid region 330-410 Internal.
Immunogen Sequence	



Western blot analysis of CCT8 Antibody. The lane on the right is blocked with the CCT8 peptide.



Western blot analysis of the lysates from HeLa cells using CCT8 antibody.



Western blot analysis of HeLa cells using TCP-1 Theta Polyclonal Antibody.

This product is suitable for in-vitro studies under the RESEARCH USE ONLY [RUO] licence. This product must not be used as for diagnostic or other medical purposes.
 St John's Laboratory Ltd, Knowledge Dock Business Centre, University Way, London, E16 2RD | Tel: 0208 223 3081