

## Anti-CCT7 antibody (190-270 Internal) (STJ95951)

STJ95951

### GENERAL INFORMATION

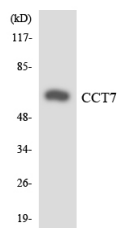
|                          |   |
|--------------------------|---|
| <b>Product Type</b>      | Primary antibodies  |
| <b>Short Description</b> | Rabbit polyclonal antibody anti-T-Complex Protein 1 Subunit Eta (190-270 Internal) is suitable for use in Western Blot and ELISA research applications. |
| <b>Applications</b>      | WB, ELISA   |
| <b>Host/Source</b>       | Rabbit  |
| <b>Reactivity</b>        | Human, Mouse, Rat   |

### PRODUCT PROPERTIES

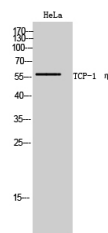
|                       |  |
|-----------------------|--|
| <b>Clonality</b>      | Polyclonal   |
| <b>Clone ID</b>       |  |
| <b>Concentration</b>  | 1 mg/mL  |
| <b>Conjugation</b>    | Unconjugated   |
| <b>Purification</b>   | The antibody was affinity-purified from rabbit anti-serum by affinity-chromatography.          |
| <b>Dilution Range</b> | WB 1:500-1:2000<br>ELISA 1:5000  |
| <b>Formulation</b>    | PBS, 50% Glycerol, 0.5% BSA and 0.02% Sodium Azide.  |
| <b>Isotype</b>        | IgG  |
| <b>Storage</b>        | Store at -20°C for up to 1 year from the date of receipt, and avoid repeat freeze-thaw cycles. |
| <b>Instruction</b>    |  |

### TARGET INFORMATION

|                           |   |
|---------------------------|---|
| <b>Gene ID</b>            | <a href="#">10574</a>   |
| <b>Gene Symbol</b>        | <a href="#">CCT7</a>  |
| <b>Uniprot ID</b>         | <a href="#">TCPH_HUMAN</a>  |
| <b>Immunogen</b>          | The antiserum was produced against synthesized peptide derived from human CCT7 at amino acid range 221-270  |
| <b>Immunogen Region</b>   | 190-270 Internal  |
| <b>Specificity</b>        | CCT7 polyclonal antibody (T-Complex Protein 1 Subunit Eta) binds to endogenous T-Complex Protein 1 Subunit Eta at the amino acid region 190-270 Internal. |
| <b>Immunogen Sequence</b> |   |



Western blot analysis of the lysates from HT-29 cells using CCT7 antibody.



Western blot analysis of HeLa cells using TCP-1 Eta Polyclonal Antibody

This product is suitable for in-vitro studies under the RESEARCH USE ONLY [RUO] licence. This product must not be used as for diagnostic or other medical purposes.  
 St John's Laboratory Ltd, Knowledge Dock Business Centre, University Way, London, E16 2RD | Tel: 0208 223 3081