

## Anti-TCFL5 antibody (280-360 C-Term) (STJ95947)

STJ95947

### GENERAL INFORMATION

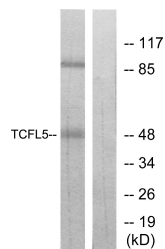
<b>Product Type</b>	Primary antibodies
<b>Short Description</b>	Rabbit polyclonal antibody anti-Transcription Factor-Like 5 Protein (280-360 C-Term) is suitable for use in Western Blot, Immunohistochemistry, Immunofluorescence and ELISA research applications.
<b>Applications</b>	WB, IHC-P, IF-P, ELISA
<b>Host/Source</b>	Rabbit
<b>Reactivity</b>	Human, Mouse

### PRODUCT PROPERTIES

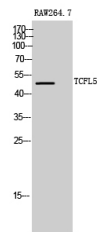
<b>Clonality</b>	Polyclonal
<b>Clone ID</b>	
<b>Concentration</b>	1 mg/mL
<b>Conjugation</b>	Unconjugated
<b>Purification</b>	The antibody was affinity-purified from rabbit anti-serum by affinity-chromatography.
<b>Dilution Range</b>	WB 1:500-1:2000 IHC 1:100-1:300 ELISA 1:20000
<b>Formulation</b>	PBS, 50% Glycerol, 0.5% BSA and 0.02% Sodium Azide.
<b>Isotype</b>	IgG
<b>Storage Instruction</b>	Store at -20°C for up to 1 year from the date of receipt, and avoid repeat freeze-thaw cycles.

### TARGET INFORMATION

<b>Gene ID</b>	10732
<b>Gene Symbol</b>	TCFL5
<b>Uniprot ID</b>	TCFL5_HUMAN
<b>Immunogen</b>	The antiserum was produced against synthesized peptide derived from human TCFL5 at amino acid range 311-360
<b>Immunogen Region</b>	280-360 C-Term
<b>Specificity</b>	TCFL5 polyclonal antibody (Transcription Factor-Like 5 Protein) binds to endogenous Transcription Factor-Like 5 Protein at the amino acid region 280-360 C-Term.
<b>Immunogen Sequence</b>	



Western blot analysis of lysates from RAW264.7 cells, using TCFL5 Antibody. The lane on the right is blocked with the synthesized peptide.



Western blot analysis of RAW264.7 cells nucleus extracted by Minute Polyclonal Antibody cells nucleus extracted by Minute TM Cytoplasmic and Nuclear Fractionation kit (SC-003, Inventibiotec, MN, USA).