

Anti-GCFC2 antibody (110-190 Internal) (STJ95946)

STJ95946

GENERAL INFORMATION

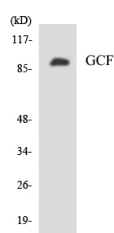
Product Type	Primary antibodies
Short Description	Rabbit polyclonal antibody anti-Intron Large Complex Component Gcfc2 (110-190 Internal) is suitable for use in Western Blot and ELISA research applications.
Applications	WB, ELISA
Host/Source	Rabbit
Reactivity	Human, Rat, Mouse

PRODUCT PROPERTIES

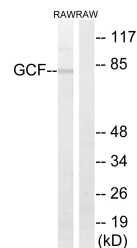
Clonality	Polyclonal
Clone ID	
Concentration	1 mg/mL
Conjugation	Unconjugated
Purification	The antibody was affinity-purified from rabbit anti-serum by affinity-chromatography.
Dilution Range	WB 1:500-1:2000 ELISA 1:20000
Formulation	PBS, 50% Glycerol, 0.5% BSA and 0.02% Sodium Azide.
Isotype	IgG
Storage	Store at -20°C for up to 1 year from the date of receipt, and avoid repeat freeze-thaw cycles.
Instruction	

TARGET INFORMATION

Gene ID	6936
Gene Symbol	GCFC2
Uniprot ID	GCFC2_HUMAN
Immunogen	The antiserum was produced against synthesized peptide derived from human GCF at amino acid range 141-190
Immunogen Region	110-190 Internal
Specificity	GCFC2 polyclonal antibody (Intron Large Complex Component Gcfc2) binds to endogenous Intron Large Complex Component Gcfc2 at the amino acid region 110-190 Internal.
Immunogen Sequence	



Western blot analysis of the lysates from HeLa cells using GCF antibody.



Western blot analysis of lysates from RAW264.7 cells, using GCF Antibody. The lane on the right is blocked with the synthesized peptide.