

Anti-TCEAL6 antibody (30-110 Internal) (STJ95941)

STJ95941

GENERAL INFORMATION

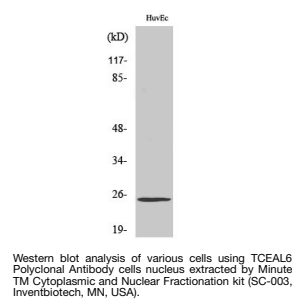
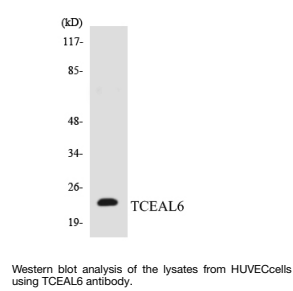
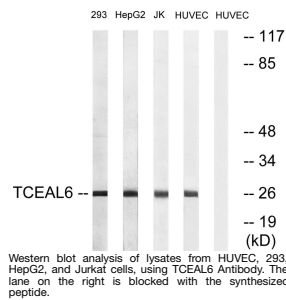
| | |
|--------------------------|---|
| Product Type | Primary antibodies |
| Short Description | Rabbit polyclonal antibody anti-Transcription Elongation Factor A Protein-Like 6 (30-110 Internal) is suitable for use in Western Blot and ELISA research applications. |
| Applications | WB, ELISA |
| Host/Source | Rabbit |
| Reactivity | Human, Rat, Mouse |

PRODUCT PROPERTIES

| | |
|----------------------------|--|
| Clonality | Polyclonal |
| Clone ID | |
| Concentration | 1 mg/mL |
| Conjugation | Unconjugated |
| Purification | The antibody was affinity-purified from rabbit anti-serum by affinity-chromatography. |
| Dilution Range | WB 1:500-1:2000 ELISA 1:10000 |
| Formulation | PBS, 50% Glycerol, 0.5% BSA and 0.02% Sodium Azide. |
| Isotype | IgG |
| Storage Instruction | Store at -20°C for up to 1 year from the date of receipt, and avoid repeat freeze-thaw cycles. |

TARGET INFORMATION

| | |
|---------------------------|--|
| Gene ID | NA |
| Gene Symbol | TCEAL6 |
| Uniprot ID | TCAL6_HUMAN |
| Immunogen | The antiserum was produced against synthesized peptide derived from human TCEAL6 at amino acid range 61-110 |
| Immunogen Region | 30-110 Internal |
| Specificity | TCEAL6 polyclonal antibody (Transcription Elongation Factor A Protein-Like 6) binds to endogenous Transcription Elongation Factor A Protein-Like 6 at the amino acid region 30-110 Internal. |
| Immunogen Sequence | |



This product is suitable for in-vitro studies under the RESEARCH USE ONLY [RUO] licence. This product must not be used as for diagnostic or other medical purposes.
St John's Laboratory Ltd, Knowledge Dock Business Centre, University Way, London, E16 2RD | Tel: 0208 223 3081