

Anti-CDH13 antibody (300-380 Internal) (STJ95937)

STJ95937

GENERAL INFORMATION

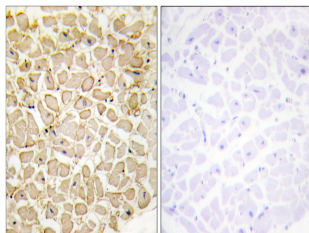
Product Type	Primary antibodies
Short Description	Rabbit polyclonal antibody anti-Cadherin-13 (300-380 Internal) is suitable for use in Western Blot, Immunohistochemistry, Immunofluorescence, Immunocytochemistry and ELISA research applications.
Applications	WB, IHC-P, IF, ICC, ELISA
Host/Source	Rabbit
Reactivity	Human, Mouse, Rat

PRODUCT PROPERTIES

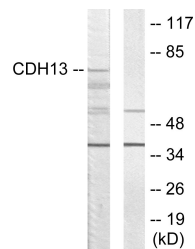
Clonality	Polyclonal
Clone ID	
Concentration	1 mg/mL
Conjugation	Unconjugated
Purification	The antibody was affinity-purified from rabbit anti-serum by affinity-chromatography.
Dilution Range	WB 1:500-1:2000 IHC 1:100-1:300 IF 1:200-1:1000 ELISA 1:20000
Formulation	PBS, 50% Glycerol, 0.5% BSA and 0.02% Sodium Azide.
Isotype	IgG
Storage Instruction	Store at -20°C for up to 1 year from the date of receipt, and avoid repeat freeze-thaw cycles.

TARGET INFORMATION

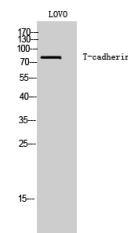
Gene ID	1012
Gene Symbol	CDH13
Uniprot ID	CAD13_HUMAN
Immunogen	The antiserum was produced against synthesized peptide derived from human CDH13 at amino acid range 331-380
Immunogen Region	300-380 Internal
Specificity	CDH13 polyclonal antibody (Cadherin-13) binds to endogenous Cadherin-13 at the amino acid region 300-380 Internal.
Immunogen Sequence	



Immunohistochemistry analysis of paraffin-embedded human heart tissue, using CDH13 Antibody. The picture on the right is blocked with the synthesized peptide.



Western blot analysis of lysates from LOVO cells, using CDH13 Antibody. The lane on the right is blocked with the synthesized peptide.



Western blot analysis of LOVO cells using T-cadherin Polyclonal Antibody

This product is suitable for in-vitro studies under the RESEARCH USE ONLY [RUO] licence. This product must not be used as for diagnostic or other medical purposes.
St John's Laboratory Ltd, Knowledge Dock Business Centre, University Way, London, E16 2RD | Tel: 0208 223 3081