

Anti-TBX2 antibody (220-300 Internal) (STJ95933)

STJ95933

GENERAL INFORMATION

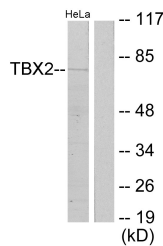
Product Type	Primary antibodies
Short Description	Rabbit polyclonal antibody anti-T-Box Transcription Factor Tbx2 (220-300 Internal) is suitable for use in Western Blot, Immunohistochemistry, Immunofluorescence and ELISA research applications.
Applications	WB, IHC-P, IF-P, ELISA
Host/Source	Rabbit
Reactivity	Human, Mouse

PRODUCT PROPERTIES

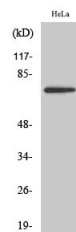
Clonality	Polyclonal
Clone ID	
Concentration	1 mg/mL
Conjugation	Unconjugated
Purification	The antibody was affinity-purified from rabbit anti-serum by affinity-chromatography.
Dilution Range	WB 1:500-1:2000 IHC 1:100-1:300 ELISA 1:20000
Formulation	PBS, 50% Glycerol, 0.5% BSA and 0.02% Sodium Azide.
Isotype	IgG
Storage Instruction	Store at -20°C for up to 1 year from the date of receipt, and avoid repeat freeze-thaw cycles.

TARGET INFORMATION

Gene ID	6909
Gene Symbol	TBX2
Uniprot ID	TBX2_HUMAN
Immunogen	The antiserum was produced against synthesized peptide derived from human TBX2 at amino acid range 251-300
Immunogen Region	220-300 Internal
Specificity	TBX2 polyclonal antibody (T-Box Transcription Factor Tbx2) binds to endogenous T-Box Transcription Factor Tbx2 at the amino acid region 220-300 Internal.
Immunogen Sequence	



Western blot analysis of lysates from HeLa cells, using TBX2 Antibody. The lane on the right is blocked with the synthesized peptide.



Western blot analysis of various cells using TBX2 Polyclonal Antibody. The cells used are HeLa, Jurkat, and K562. The cells nucleus extracted by Minute TM Cytoplasmic and Nuclear Fractionation kit (SC-003, Inventiotech, MN, USA).

This product is suitable for in-vitro studies under the RESEARCH USE ONLY [RUO] licence. This product must not be used as for diagnostic or other medical purposes.
St John's Laboratory Ltd, Knowledge Dock Business Centre, University Way, London, E16 2RD | Tel: 0208 223 3081