

Anti-TBX1 antibody (280-360 C-Term) (STJ95929)

STJ95929

GENERAL INFORMATION

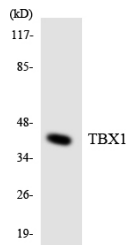
Product Type	Primary antibodies
Short Description	Rabbit polyclonal antibody anti-T-Box Transcription Factor Tbx1 (280-360 C-Term) is suitable for use in Western Blot, Immunohistochemistry, Immunofluorescence, Immunocytochemistry and ELISA research applications.
Applications	WB, IHC-P, IF, ICC, ELISA
Host/Source	Rabbit
Reactivity	Human, Rat, Mouse

PRODUCT PROPERTIES

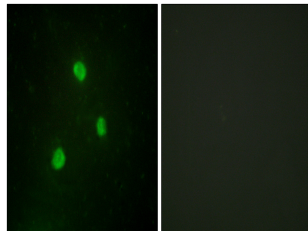
Clonality	Polyclonal
Clone ID	
Concentration	1 mg/mL
Conjugation	Unconjugated
Purification	The antibody was affinity-purified from rabbit anti-serum by affinity-chromatography.
Dilution Range	WB 1:500-1:2000 IHC 1:100-1:300 IF 1:200-1:1000 ELISA 1:20000
Formulation	PBS, 50% Glycerol, 0.5% BSA and 0.02% Sodium Azide.
Isotype	IgG
Storage Instruction	Store at -20°C for up to 1 year from the date of receipt, and avoid repeat freeze-thaw cycles.

TARGET INFORMATION

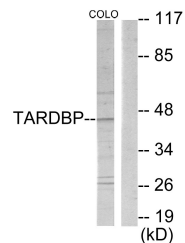
Gene ID	6899
Gene Symbol	TBX1
Uniprot ID	TBX1_HUMAN
Immunogen	The antiserum was produced against synthesized peptide derived from human TBX1 at amino acid range 311-360
Immunogen Region	280-360 C-Term
Specificity	TBX1 polyclonal antibody (T-Box Transcription Factor Tbx1) binds to endogenous T-Box Transcription Factor Tbx1 at the amino acid region 280-360 C-Term.
Immunogen Sequence	



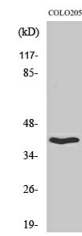
Western blot analysis of the lysates from 293 cells using TBX1 antibody.



Immunofluorescence analysis of A549 cells, using TBX1 Antibody. The picture on the right is blocked with the synthesized peptide.



Western blot analysis of lysates from COLO205 cells, using TBX1 Antibody. The lane on the right is blocked with the synthesized peptide.



Western blot analysis of various cells using TBX1 Polyclonal Antibody cells nucleus extracted by Minute TM Cytoplasmic and Nuclear Fractionation kit (SC-003, Inventiotech, MN, USA).

This product is suitable for in-vitro studies under the RESEARCH USE ONLY [RUO] licence. This product must not be used as for diagnostic or other medical purposes.
St John's Laboratory Ltd, Knowledge Dock Business Centre, University Way, London, E16 2RD | Tel: 0208 223 3081