

Anti-TBL2 antibody (350-430 C-Term) (STJ95927)

STJ95927

GENERAL INFORMATION

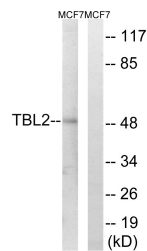
Product Type	Primary antibodies
Short Description	Rabbit polyclonal antibody anti-Transducin Beta-Like Protein 2 (350-430 C-Term) is suitable for use in Western Blot, Immunohistochemistry, Immunofluorescence and ELISA research applications.
Applications	WB, IHC-P, IF-P, ELISA
Host/Source	Rabbit
Reactivity	Human, Rat, Mouse

PRODUCT PROPERTIES

Clonality	Polyclonal
Clone ID	
Concentration	1 mg/mL
Conjugation	Unconjugated
Purification	The antibody was affinity-purified from rabbit anti-serum by affinity-chromatography.
Dilution Range	WB 1:500-1:2000 IHC 1:100-1:300 ELISA 1:5000
Formulation	PBS, 50% Glycerol, 0.5% BSA and 0.02% Sodium Azide.
Isotype	IgG
Storage Instruction	Store at -20°C for up to 1 year from the date of receipt, and avoid repeat freeze-thaw cycles.

TARGET INFORMATION

Gene ID	26608
Gene Symbol	TBL2
Uniprot ID	TBL2_HUMAN
Immunogen	The antiserum was produced against synthesized peptide derived from human TBL2 at amino acid range 381-430
Immunogen Region	350-430 C-Term
Specificity	TBL2 polyclonal antibody (Transducin Beta-Like Protein 2) binds to endogenous Transducin Beta-Like Protein 2 at the amino acid region 350-430 C-Term.
Immunogen Sequence	



Western blot analysis of lysates from MCF-7 cells, using TBL2 Antibody. The lane on the right is blocked with the synthesized peptide.