

Anti-TBC1D4 antibody (580-660) (STJ95925)

STJ95925

GENERAL INFORMATION

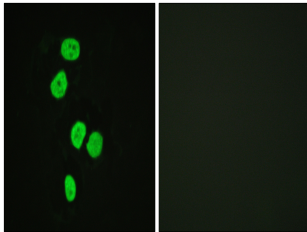
Product Type	Primary antibodies
Short Description	Rabbit polyclonal antibody anti-Tbc1 Domain Family Member 4 (580-660) is suitable for use in Immunohistochemistry, Immunofluorescence, Immunocytochemistry and ELISA research applications.
Applications	IHC-P, IF, ICC, ELISA
Host/Source	Rabbit
Reactivity	Human, Mouse

PRODUCT PROPERTIES

Clonality	Polyclonal
Clone ID	
Concentration	1 mg/mL
Conjugation	Unconjugated
Purification	The antibody was affinity-purified from rabbit anti-serum by affinity-chromatography.
Dilution Range	IHC 1:100-1:300 IF 1:200-1:1000 ELISA 1:10000
Formulation	PBS, 50% Glycerol, 0.5% BSA and 0.02% Sodium Azide.
Isotype	IgG
Storage Instruction	Store at -20°C for up to 1 year from the date of receipt, and avoid repeat freeze-thaw cycles.

TARGET INFORMATION

Gene ID	9882
Gene Symbol	TBC1D4
Uniprot ID	TBCD4_HUMAN
Immunogen	The antiserum was produced against synthesized peptide derived from human AS160 at amino acid range 611-660
Immunogen Region	580-660
Specificity	TBC1D4 polyclonal antibody (Tbc1 Domain Family Member 4) binds to endogenous Tbc1 Domain Family Member 4 at the amino acid region 580-660.
Immunogen Sequence	



Immunofluorescence analysis of HeLa cells, using AS160 Antibody. The picture on the right is blocked with the synthesized peptide.