

Anti-TBC1D3A/B/C antibody (450-530 C-Term) (STJ95924)

STJ95924

GENERAL INFORMATION

Product Type	Primary antibodies
Short Description	Rabbit polyclonal antibody anti-TBC1 domain family member 3 and TBC1 domain family member 3B and TBC1 domain family member 3C (450-530 C-Term) is suitable for use in Western Blot, Immunofluorescence, Immunocytochemistry and ELISA research application
Applications	WB, IF, ICC, ELISA
Host/Source	Rabbit
Reactivity	Human, Rat, Mouse

PRODUCT PROPERTIES

Clonality	Polyclonal
Clone ID	
Concentration	1 mg/mL
Conjugation	Unconjugated
Purification	The antibody was affinity-purified from rabbit anti-serum by affinity-chromatography.
Dilution Range	WB 1:500-1:2000 ELISA 1:20000
Formulation	PBS, 50% Glycerol, 0.5% BSA and 0.02% Sodium Azide.
Isotype	IgG
Storage Instruction	Store at -20°C for up to 1 year from the date of receipt, and avoid repeat freeze-thaw cycles.

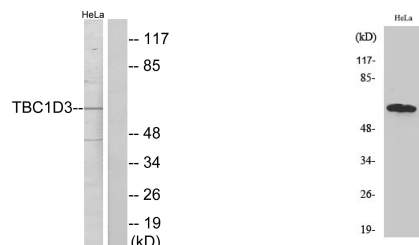
TARGET INFORMATION

Gene ID [101060321/414060/729873](#)
[414060/729873](#)
[TBC1D3C](#)
[TBC1D3](#)
[TBC3C_HUMAN](#)
[TBC3A_HUMAN](#)
[TBC3B_HUMAN](#)

Immunogen The antiserum was produced against synthesized peptide derived from human TBC1D3 at amino acid range 481-530
Immunogen Region 450-530 C-Term

Specificity TBC1D3A/B/C polyclonal antibody (TBC1 domain family member 3 and TBC1 domain family member 3B and TBC1 domain family member 3C) binds to endogenous TBC1 domain family member 3 and TBC1 domain family member 3B and TBC1 domain family member 3C at the a

Immunogen Sequence



Western blot analysis of lysates from HeLa cells, using TBC1D3 Antibody. The lane on the right is blocked with the synthesized peptide.

Western blot analysis of various cells using TBC1D3A/B/C Polyclonal Antibody

This product is suitable for in-vitro studies under the RESEARCH USE ONLY [RUO] licence. This product must not be used as for diagnostic or other medical purposes.
 St John's Laboratory Ltd, Knowledge Dock Business Centre, University Way, London, E16 2RD | Tel: 0208 223 3081