

Anti-SLC6A6 antibody (530-610 C-Term) (STJ95923)

STJ95923

GENERAL INFORMATION

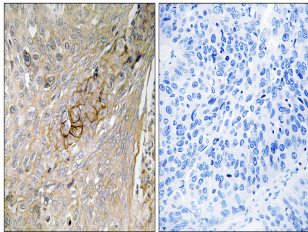
Product Type	Primary antibodies
Short Description	Rabbit polyclonal antibody anti-Sodium-And Chloride-Dependent Taurine Transporter (530-610 C-Term) is suitable for use in Western Blot, Immunohistochemistry, Immunofluorescence and ELISA research applications.
Applications	WB, IHC-P, IF-P, ELISA
Host/Source	Rabbit
Reactivity	Human, Mouse, Rat

PRODUCT PROPERTIES

Clonality	Polyclonal
Clone ID	
Concentration	1 mg/mL
Conjugation	Unconjugated
Purification	The antibody was affinity-purified from rabbit anti-serum by affinity-chromatography.
Dilution Range	WB 1:500-1:2000 IHC 1:100-1:300 ELISA 1:40000
Formulation	PBS, 50% Glycerol, 0.5% BSA and 0.02% Sodium Azide.
Isotype	IgG
Storage Instruction	Store at -20°C for up to 1 year from the date of receipt, and avoid repeat freeze-thaw cycles.

TARGET INFORMATION

Gene ID	6533
Gene Symbol	SLC6A6
Uniprot ID	SC6A6_HUMAN
Immunogen	The antiserum was produced against synthesized peptide derived from human SLC6A6 at amino acid range 561-610
Immunogen Region	530-610 C-Term
Specificity	SLC6A6 polyclonal antibody (Sodium-And Chloride-Dependent Taurine Transporter) binds to endogenous Sodium-And Chloride-Dependent Taurine Transporter at the amino acid region 530-610 C-Term.
Immunogen Sequence	



Immunohistochemistry analysis of paraffin-embedded human lung carcinoma tissue, using SLC6A6 Antibody. The picture on the right is blocked with the synthesized peptide.