

Anti-NXF1 antibody (1-80 N-Term) (STJ95906)

STJ95906

GENERAL INFORMATION

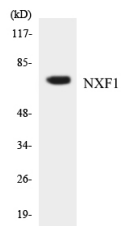
Product Type	Primary antibodies
Short Description	Rabbit polyclonal antibody anti-Nuclear Rna Export Factor 1 (1-80 N-Term) is suitable for use in Western Blot and ELISA research applications.
Applications	WB, ELISA
Host/Source	Rabbit
Reactivity	Human, Rat, Mouse

PRODUCT PROPERTIES

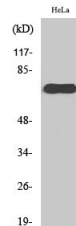
Clonality	Polyclonal
Clone ID	
Concentration	1 mg/mL
Conjugation	Unconjugated
Purification	The antibody was affinity-purified from rabbit anti-serum by affinity-chromatography.
Dilution Range	WB 1:500-1:2000 ELISA 1:40000
Formulation	PBS, 50% Glycerol, 0.5% BSA and 0.02% Sodium Azide.
Isotype	IgG
Storage Instruction	Store at -20°C for up to 1 year from the date of receipt, and avoid repeat freeze-thaw cycles.

TARGET INFORMATION

Gene ID	10482
Gene Symbol	NXF1
Uniprot ID	NXF1_HUMAN
Immunogen	The antiserum was produced against synthesized peptide derived from human NXF1 at amino acid range 1-50
Immunogen Region	1-80 N-Term
Specificity	NXF1 polyclonal antibody (Nuclear Rna Export Factor 1) binds to endogenous Nuclear Rna Export Factor 1 at the amino acid region 1-80 N-Term.
Immunogen Sequence	



Western blot analysis of the lysates from HeLa cells using NXF1 antibody.



Western blot analysis of various cells using TAP Polyclonal Antibody diluted at 1: 2000

This product is suitable for in-vitro studies under the RESEARCH USE ONLY [RUO] licence. This product must not be used as for diagnostic or other medical purposes.
St John's Laboratory Ltd, Knowledge Dock Business Centre, University Way, London, E16 2RD | Tel: 0208 223 3081