

Anti-TAL1 antibody (70-150) (STJ95903)

STJ95903

GENERAL INFORMATION

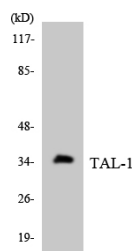
Product Type	Primary antibodies
Short Description	Rabbit polyclonal antibody anti-T-Cell Acute Lymphocytic Leukemia Protein 1 (70-150) is suitable for use in Western Blot, Immunohistochemistry, Immunofluorescence and ELISA research applications.
Applications	WB, IHC-P, IF-P, ELISA
Host/Source	Rabbit
Reactivity	Human, Mouse

PRODUCT PROPERTIES

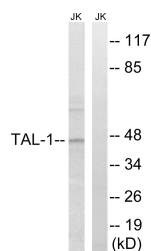
Clonality	Polyclonal
Clone ID	
Concentration	1 mg/mL
Conjugation	Unconjugated
Purification	The antibody was affinity-purified from rabbit anti-serum by affinity-chromatography.
Dilution Range	WB 1:500-1:2000 IHC 1:100-1:300 ELISA 1:20000
Formulation	PBS, 50% Glycerol, 0.5% BSA and 0.02% Sodium Azide.
Isotype	IgG
Storage Instruction	Store at 20°C for up to 1 year from the date of receipt, and avoid repeat freeze-thaw cycles.

TARGET INFORMATION

Gene ID	6886
Gene Symbol	TAL1
Uniprot ID	TAL1_HUMAN
Immunogen Region	The antiserum was produced against synthesized peptide derived from human TAL-1 at amino acid range 96-145 70-150
Specificity	TAL1 polyclonal antibody (T-Cell Acute Lymphocytic Leukemia Protein 1) binds to endogenous T-Cell Acute Lymphocytic Leukemia Protein 1 at the amino acid region 70-150.
Immunogen Sequence	



Western blot analysis of the lysates from HT-29 cells using TAL-1 antibody.



Western blot analysis of lysates from Jurkat cells, treated with PMA 125ng/ml 30', using TAL-1 Antibody. The lane on the right is blocked with the synthesized peptide.