

Anti-TAGAP antibody (160-240 Internal) (STJ95899)

STJ95899

GENERAL INFORMATION

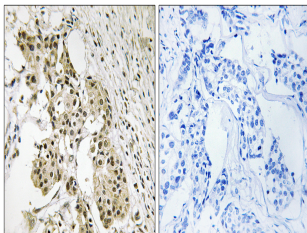
Product Type	Primary antibodies
Short Description	Rabbit polyclonal antibody anti-T-Cell Activation Rho Gtpase-Activating Protein (160-240 Internal) is suitable for use in Immunohistochemistry, Immunofluorescence and ELISA research applications.
Applications	IHC-P, IF-P, ELISA
Host/Source	Rabbit
Reactivity	Human, Rat, Mouse

PRODUCT PROPERTIES

Clonality	Polyclonal
Clone ID	
Concentration	1 mg/mL
Conjugation	Unconjugated
Purification	The antibody was affinity-purified from rabbit anti-serum by affinity-chromatography.
Dilution	IHC 1:100-1:300
Range	ELISA 1:5000
Formulation	PBS, 50% Glycerol, 0.5% BSA and 0.02% Sodium Azide.
Isotype	IgG
Storage	Store at -20°C for up to 1 year from the date of receipt, and avoid repeat freeze-thaw cycles.
Instruction	

TARGET INFORMATION

Gene ID	117289
Gene Symbol	TAGAP
Uniprot ID	TAGAP_HUMAN
Immunogen	The antiserum was produced against synthesized peptide derived from human TAGAP at amino acid range 191-240
Immunogen Region	160-240 Internal
Specificity	TAGAP polyclonal antibody (T-Cell Activation Rho Gtpase-Activating Protein) binds to endogenous T-Cell Activation Rho Gtpase-Activating Protein at the amino acid region 160-240 Internal.
Immunogen Sequence	



Immunohistochemistry analysis of paraffin-embedded human breast carcinoma, using TAGAP Antibody. The picture on the right is blocked with the synthesized peptide.