

Anti-CPB2 antibody (290-370 C-Term) (STJ95898)

STJ95898

GENERAL INFORMATION

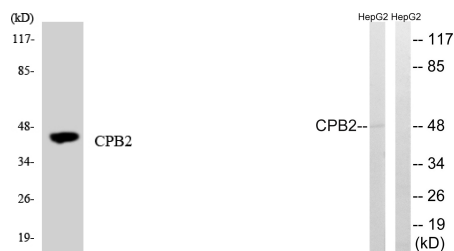
Product Type	Primary antibodies
Short Description	Rabbit polyclonal antibody anti-Carboxypeptidase B2 (290-370 C-Term) is suitable for use in Western Blot and ELISA research applications.
Applications	WB, ELISA
Host/Source	Rabbit
Reactivity	Human, Rat, Mouse

PRODUCT PROPERTIES

Clonality	Polyclonal
Clone ID	
Concentration	1 mg/mL
Conjugation	Unconjugated
Purification	The antibody was affinity-purified from rabbit anti-serum by affinity-chromatography.
Dilution Range	WB 1:500-1:2000 ELISA 1:40000
Formulation	PBS, 50% Glycerol, 0.5% BSA and 0.02% Sodium Azide.
Isotype	IgG
Storage Instruction	Store at -20°C for up to 1 year from the date of receipt, and avoid repeat freeze-thaw cycles.

TARGET INFORMATION

Gene ID	1361
Gene Symbol	CPB2
Uniprot ID	CBPB2_HUMAN
Immunogen	The antiserum was produced against synthesized peptide derived from human CPB2 at amino acid range 321-370
Immunogen Region	290-370 C-Term
Specificity	CPB2 polyclonal antibody (Carboxypeptidase B2) binds to endogenous Carboxypeptidase B2 at the amino acid region 290-370 C-Term.
Immunogen Sequence	



Western blot analysis of the lysates from K562 cells using CPB2 antibody.

Western blot analysis of lysates from HepG2 cells, using CPB2 Antibody. The lane on the right is blocked with the synthesized peptide.

This product is suitable for in-vitro studies under the RESEARCH USE ONLY [RUO] licence. This product must not be used as for diagnostic or other medical purposes.
 St John's Laboratory Ltd, Knowledge Dock Business Centre, University Way, London, E16 2RD | Tel: 0208 223 3081