

Anti-TAF15 antibody (320-400 Internal) (STJ95895)

STJ95895

GENERAL INFORMATION

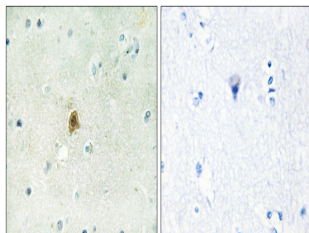
Product Type	Primary antibodies
Short Description	Rabbit polyclonal antibody anti-Tata-Binding Protein-Associated Factor 2n (320-400 Internal) is suitable for use in Western Blot, Immunohistochemistry, Immunofluorescence and ELISA research applications.
Applications	WB, IHC-P, IF-P, ELISA
Host/Source	Rabbit
Reactivity	Human, Mouse

PRODUCT PROPERTIES

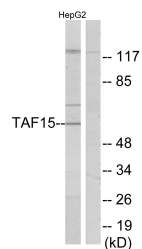
Clonality	Polyclonal
Clone ID	
Concentration	1 mg/mL
Conjugation	Unconjugated
Purification	The antibody was affinity-purified from rabbit anti-serum by affinity-chromatography.
Dilution Range	WB 1:500-1:2000 IHC 1:100-1:300 ELISA 1:5000
Formulation	PBS, 50% Glycerol, 0.5% BSA and 0.02% Sodium Azide.
Isotype	IgG
Storage Instruction	Store at -20°C for up to 1 year from the date of receipt, and avoid repeat freeze-thaw cycles.

TARGET INFORMATION

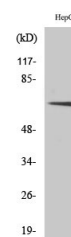
Gene ID	8148
Gene Symbol	TAF15
Uniprot ID	RBP56_HUMAN
Immunogen	The antiserum was produced against synthesized peptide derived from human TAF15 at amino acid range 351-400
Immunogen Region	320-400 Internal
Specificity	TAF15 polyclonal antibody (Tata-Binding Protein-Associated Factor 2n) binds to endogenous Tata-Binding Protein-Associated Factor 2n at the amino acid region 320-400 Internal.
Immunogen Sequence	



Immunohistochemistry analysis of paraffin-embedded human brain tissue, using TAF15 Antibody. The picture on the right is blocked with the synthesized peptide.



Western blot analysis of lysates from HepG2 cells, using TAF15 Antibody. The lane on the right is blocked with the synthesized peptide.



Western blot analysis of various cells using TAF II p68 Polyclonal Antibody

This product is suitable for in-vitro studies under the RESEARCH USE ONLY [RUO] licence. This product must not be used as for diagnostic or other medical purposes.
St John's Laboratory Ltd, Knowledge Dock Business Centre, University Way, London, E16 2RD | Tel: 0208 223 3081