

Anti-TAF1A antibody (270-350 Internal) (STJ95890)

STJ95890

GENERAL INFORMATION

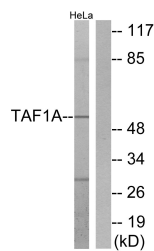
Product Type	Primary antibodies
Short Description	Rabbit polyclonal antibody anti-Tata Box-Binding Protein-Associated Factor Rna Polymerase I Subunit A (270-350 Internal) is suitable for use in Western Blot, Immunohistochemistry, Immunofluorescence and ELISA research applications.
Applications	WB, IHC-P, IF-P, ELISA
Host/Source	Rabbit
Reactivity	Human, Rat

PRODUCT PROPERTIES

Clonality	Polyclonal
Clone ID	
Concentration	1 mg/mL
Conjugation	Unconjugated
Purification	The antibody was affinity-purified from rabbit anti-serum by affinity-chromatography.
Dilution Range	WB 1:500-1:2000 IHC 1:100-1:300 ELISA 1:20000
Formulation	PBS, 50% Glycerol, 0.5% BSA and 0.02% Sodium Azide.
Isotype	IgG
Storage Instruction	Store at -20°C for up to 1 year from the date of receipt, and avoid repeat freeze-thaw cycles.

TARGET INFORMATION

Gene ID	9015
Gene Symbol	TAF1A
Uniprot ID	TAF1A_HUMAN
Immunogen Region	The antiserum was produced against synthesized peptide derived from human TAF1A at amino acid range 301-350
Specificity	270-350 Internal
Immunogen Sequence	TAF1A polyclonal antibody (Tata Box-Binding Protein-Associated Factor Rna Polymerase I Subunit A) binds to endogenous Tata Box-Binding Protein-Associated Factor Rna Polymerase I Subunit A at the amino acid region 270-350 Internal.



Western blot analysis of lysates from HeLa cells, using TAF1A Antibody. The lane on the right is blocked with the synthesized peptide.