

Anti-TADA2A antibody (180-260 Internal) (STJ95889)

STJ95889

GENERAL INFORMATION

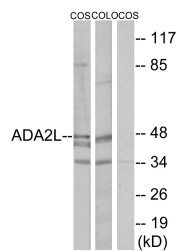
Product Type	Primary antibodies
Short Description	Rabbit polyclonal antibody anti-Transcriptional Adapter 2-Alpha (180-260 Internal) is suitable for use in Western Blot and ELISA research applications.
Applications	WB, ELISA
Host/Source	Rabbit
Reactivity	Human, Mouse, Rat, Monkey

PRODUCT PROPERTIES

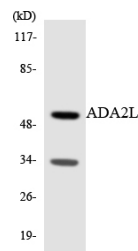
Clonality	Polyclonal
Clone ID	
Concentration	1 mg/mL
Conjugation	Unconjugated
Purification	The antibody was affinity-purified from rabbit anti-serum by affinity-chromatography.
Dilution Range	WB 1:500-1:2000 ELISA 1:10000
Formulation	PBS, 50% Glycerol, 0.5% BSA and 0.02% Sodium Azide.
Isotype	IgG
Storage	Store at -20°C for up to 1 year from the date of receipt, and avoid repeat freeze-thaw cycles.
Instruction	

TARGET INFORMATION

Gene ID	6871
Gene Symbol	TADA2A
Uniprot ID	TAD2A_HUMAN
Immunogen	The antiserum was produced against synthesized peptide derived from human ADA2L at amino acid range 206-255
Immunogen Region	180-260 Internal
Specificity	TADA2A polyclonal antibody (Transcriptional Adapter 2-Alpha) binds to endogenous Transcriptional Adapter 2-Alpha at the amino acid region 180-260 Internal.
Immunogen Sequence	



Western blot analysis of lysates from COS7 and COLO205 cells, using ADA2L Antibody. The lane on the right is blocked with the synthesized peptide.



Western blot analysis of the lysates from RAW264.7 cells using ADA2L antibody.



Western blot analysis of various cells using TADA2L Polyclonal Antibody diluted at 1:2000 cells nucleus extracted by Minute™ Cytoplasmic and Nuclear Fractionation kit (SC-003, Inventibiotech, MN, USA).