

Anti-TAAR3P antibody (180-260 Internal) (STJ95883)

STJ95883

GENERAL INFORMATION

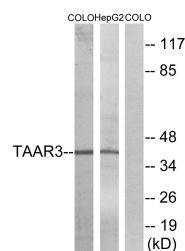
Product Type	Primary antibodies
Short Description	Rabbit polyclonal antibody anti-Putative Trace Amine-Associated Receptor 3 (180-260 Internal) is suitable for use in Western Blot, Immunofluorescence, Immunocytochemistry and ELISA research applications.
Applications	WB, IF, ICC, ELISA
Host/Source	Rabbit
Reactivity	Human, Rat, Mouse

PRODUCT PROPERTIES

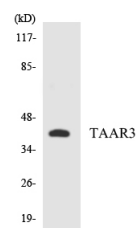
Clonality	Polyclonal
Clone ID	
Concentration	1 mg/mL
Conjugation	Unconjugated
Purification	The antibody was affinity-purified from rabbit anti-serum by affinity-chromatography.
Dilution Range	WB 1:500-1:2000 IF 1:200-1:1000 ELISA 1:10000
Formulation	PBS, 50% Glycerol, 0.5% BSA and 0.02% Sodium Azide.
Isotype	IgG
Storage Instruction	Store at 20°C for up to 1 year from the date of receipt, and avoid repeat freeze-thaw cycles.

TARGET INFORMATION

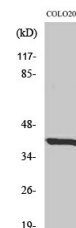
Gene ID	NA
Gene Symbol	TAAR3P
Uniprot ID	TAAR3_HUMAN
Immunogen	The antiserum was produced against synthesized peptide derived from human TAAR3 at amino acid range 206-255
Immunogen Region	180-260 Internal
Specificity	TAAR3P polyclonal antibody (Putative Trace Amine-Associated Receptor 3) binds to endogenous Putative Trace Amine-Associated Receptor 3 at the amino acid region 180-260 Internal.
Immunogen Sequence	



Western blot analysis of lysates from COLO and HepG2 cells, using TAAR3 Antibody. The lane on the right is blocked with the synthesized peptide.



Western blot analysis of the lysates from HepG2 cells using TAAR3 antibody.



Western blot analysis of various cells using TAAR3 Polyclonal Antibody