

## Anti-TAS2R8 antibody (20-100 Internal) (STJ95881)

STJ95881

### GENERAL INFORMATION

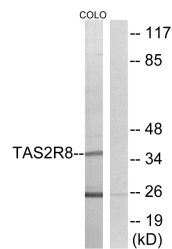
<b>Product Type</b>	Primary antibodies
<b>Short Description</b>	Rabbit polyclonal antibody anti-Taste Receptor Type 2 Member 8 (20-100 Internal) is suitable for use in Western Blot, Immunofluorescence, Immunocytochemistry and ELISA research applications.
<b>Applications</b>	WB, IF, ICC, ELISA
<b>Host/Source</b>	Rabbit
<b>Reactivity</b>	Human, Rat, Mouse

### PRODUCT PROPERTIES

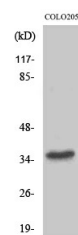
<b>Clonality</b>	Polyclonal
<b>Clone ID</b>	
<b>Concentration</b>	1 mg/mL
<b>Conjugation</b>	Unconjugated
<b>Purification</b>	The antibody was affinity-purified from rabbit anti-serum by affinity-chromatography.
<b>Dilution Range</b>	WB 1:500-1:2000 IF 1:200-1:1000 ELISA 1:10000
<b>Formulation</b>	PBS, 50% Glycerol, 0.5% BSA and 0.02% Sodium Azide.
<b>Isotype</b>	IgG
<b>Storage Instruction</b>	Store at -20°C for up to 1 year from the date of receipt, and avoid repeat freeze-thaw cycles.

### TARGET INFORMATION

<b>Gene ID</b>	50836
<b>Gene Symbol</b>	TAS2R8
<b>Uniprot ID</b>	TA2R8_HUMAN
<b>Immunogen</b>	The antiserum was produced against synthesized peptide derived from human TAS2R8 at amino acid range 45-94
<b>Immunogen Region</b>	20-100 Internal
<b>Specificity</b>	TAS2R8 polyclonal antibody (Taste Receptor Type 2 Member 8) binds to endogenous Taste Receptor Type 2 Member 8 at the amino acid region 20-100 Internal.
<b>Immunogen Sequence</b>	



Western blot analysis of lysates from COLO cells, using TAS2R8 Antibody. The lane on the right is blocked with the synthesized peptide.



Western blot analysis of various cells using T2R8 Polyclonal Antibody