

Anti-TAS2R5 antibody (150-230 Internal) (STJ95879)

STJ95879

GENERAL INFORMATION

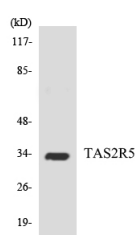
Product Type	Primary antibodies
Short Description	Rabbit polyclonal antibody anti-Taste Receptor Type 2 Member 5 (150-230 Internal) is suitable for use in Western Blot and ELISA research applications.
Applications	WB, ELISA
Host/Source	Rabbit
Reactivity	Human, Rat, Mouse

PRODUCT PROPERTIES

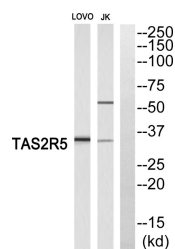
Clonality	Polyclonal
Clone ID	
Concentration	1 mg/mL
Conjugation	Unconjugated
Purification	The antibody was affinity-purified from rabbit anti-serum by affinity-chromatography.
Dilution Range	WB 1:500-1:2000 ELISA 1:5000
Formulation	PBS, 50% Glycerol, 0.5% BSA and 0.02% Sodium Azide.
Isotype	IgG
Storage Instruction	Store at -20°C for up to 1 year from the date of receipt, and avoid repeat freeze-thaw cycles.

TARGET INFORMATION

Gene ID	54429
Gene Symbol	TAS2R5
Uniprot ID	TA2R5_HUMAN
Immunogen	The antiserum was produced against synthesized peptide derived from human TAS2R5 at amino acid range 178-227
Immunogen Region	150-230 Internal
Specificity	TAS2R5 polyclonal antibody (Taste Receptor Type 2 Member 5) binds to endogenous Taste Receptor Type 2 Member 5 at the amino acid region 150-230 Internal.
Immunogen Sequence	



Western blot analysis of the lysates from HepG2 cells using TAS2R5 antibody.



Western blot analysis of TAS2R5 Antibody. The lane on the right is blocked with the TAS2R5 peptide.

This product is suitable for in-vitro studies under the RESEARCH USE ONLY [RUO] licence. This product must not be used as for diagnostic or other medical purposes.
 St John's Laboratory Ltd, Knowledge Dock Business Centre, University Way, London, E16 2RD | Tel: 0208 223 3081