

## Anti-TAS2R43 antibody (100-180 Internal) (STJ95875)

STJ95875

### GENERAL INFORMATION

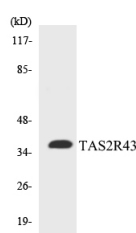
<b>Product Type</b>	Primary antibodies
<b>Short Description</b>	Rabbit polyclonal antibody anti-Taste Receptor Type 2 Member 43 (100-180 Internal) is suitable for use in Western Blot and ELISA research applications.
<b>Applications</b>	WB, ELISA
<b>Host/Source</b>	Rabbit
<b>Reactivity</b>	Human, Rat, Mouse

### PRODUCT PROPERTIES

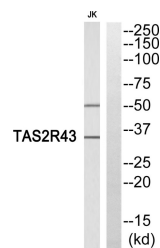
<b>Clonality</b>	Polyclonal
<b>Clone ID</b>	
<b>Concentration</b>	1 mg/mL
<b>Conjugation</b>	Unconjugated
<b>Purification</b>	The antibody was affinity-purified from rabbit anti-serum by affinity-chromatography.
<b>Dilution Range</b>	WB 1:500-1:2000 ELISA 1:20000
<b>Formulation</b>	PBS, 50% Glycerol, 0.5% BSA and 0.02% Sodium Azide.
<b>Isotype</b>	IgG
<b>Storage Instruction</b>	Store at -20°C for up to 1 year from the date of receipt, and avoid repeat freeze-thaw cycles.

### TARGET INFORMATION

<b>Gene ID</b>	<a href="#">259289</a>
<b>Gene Symbol</b>	<a href="#">TAS2R43</a>
<b>Uniprot ID</b>	<a href="#">T2R43_HUMAN</a>
<b>Immunogen</b>	The antiserum was produced against synthesized peptide derived from human TAS2R43 at amino acid range 124-173
<b>Immunogen Region</b>	100-180 Internal
<b>Specificity</b>	TAS2R43 polyclonal antibody (Taste Receptor Type 2 Member 43) binds to endogenous Taste Receptor Type 2 Member 43 at the amino acid region 100-180 Internal.
<b>Immunogen Sequence</b>	



Western blot analysis of the lysates from COLO205 cells using TAS2R43 antibody.



Western blot analysis of TAS2R43 Antibody. The lane on the right is blocked with the TAS2R43 peptide.

This product is suitable for in-vitro studies under the RESEARCH USE ONLY [RUO] licence. This product must not be used as for diagnostic or other medical purposes.  
St John's Laboratory Ltd, Knowledge Dock Business Centre, University Way, London, E16 2RD | Tel: 0208 223 3081