

Anti-TAS2R3 antibody (110-190 Internal) (STJ95873)

STJ95873

GENERAL INFORMATION

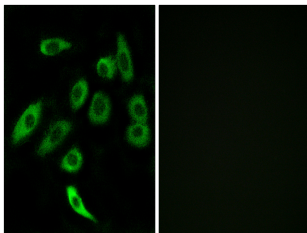
Product Type	Primary antibodies
Short Description	Rabbit polyclonal antibody anti-Taste Receptor Type 2 Member 3 (110-190 Internal) is suitable for use in Immunofluorescence, Immunocytochemistry and ELISA research applications.
Applications	IF, ICC, ELISA
Host/Source	Rabbit
Reactivity	Human, Rat, Mouse

PRODUCT PROPERTIES

Clonality	Polyclonal
Clone ID	
Concentration	1 mg/mL
Conjugation	Unconjugated
Purification	The antibody was affinity-purified from rabbit anti-serum by affinity-chromatography.
Dilution Range	IF 1:200-1:1000 ELISA 1:20000
Formulation	PBS, 50% Glycerol, 0.5% BSA and 0.02% Sodium Azide.
Isotype	IgG
Storage	Store at -20°C for up to 1 year from the date of receipt, and avoid repeat freeze-thaw cycles.
Instruction	

TARGET INFORMATION

Gene ID	50831
Gene Symbol	TAS2R3
Uniprot ID	TA2R3_HUMAN
Immunogen	The antiserum was produced against synthesized peptide derived from human TAS2R3 at amino acid range 140-189
Immunogen Region	110-190 Internal
Specificity	TAS2R3 polyclonal antibody (Taste Receptor Type 2 Member 3) binds to endogenous Taste Receptor Type 2 Member 3 at the amino acid region 110-190 Internal.
Immunogen Sequence	



Immunofluorescence analysis of A549 cells, using TAS2R3 Antibody. The picture on the right is blocked with the synthesized peptide.