

Anti-TAS2R14 antibody (200-280 Internal) (STJ95871)

STJ95871

GENERAL INFORMATION

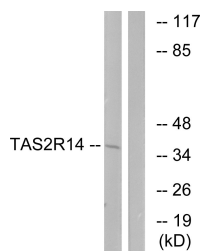
Product Type	Primary antibodies
Short Description	Rabbit polyclonal antibody anti-Taste Receptor Type 2 Member 14 (200-280 Internal) is suitable for use in Western Blot, Immunofluorescence, Immunocytochemistry and ELISA research applications.
Applications	WB, IF, ICC, ELISA
Host/Source	Rabbit
Reactivity	Human, Rat, Mouse

PRODUCT PROPERTIES

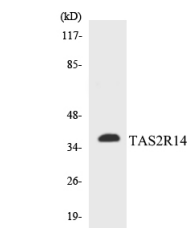
Clonality	Polyclonal
Clone ID	
Concentration	1 mg/mL
Conjugation	Unconjugated
Purification	The antibody was affinity-purified from rabbit anti-serum by affinity-chromatography.
Dilution Range	WB 1:500-1:2000 IF 1:200-1:1000 ELISA 1:10000
Formulation	PBS, 50% Glycerol, 0.5% BSA and 0.02% Sodium Azide.
Isotype	IgG
Storage Instruction	Store at 20°C for up to 1 year from the date of receipt, and avoid repeat freeze-thaw cycles.

TARGET INFORMATION

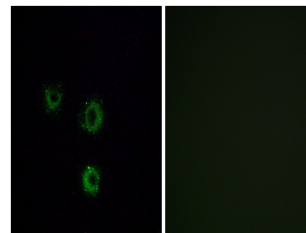
Gene ID	50840
Gene Symbol	TAS2R14
Uniprot ID	T2R14_HUMAN
Immunogen Region	The antiserum was produced against synthesized peptide derived from human TAS2R14 at amino acid range 229-278
Immunogen Region	200-280 Internal
Specificity	TAS2R14 polyclonal antibody (Taste Receptor Type 2 Member 14) binds to endogenous Taste Receptor Type 2 Member 14 at the amino acid region 200-280 Internal.
Immunogen Sequence	



Western blot analysis of lysates from MCF-7 cells, using TAS2R14 Antibody. The lane on the right is blocked with the synthesized peptide.



Western blot analysis of the lysates from COLO205 cells using TAS2R14 antibody.



Immunofluorescence analysis of MCF7 cells, using TAS2R14 Antibody. The picture on the right is blocked with the synthesized peptide.

This product is suitable for in-vitro studies under the RESEARCH USE ONLY [RUO] licence. This product must not be used as for diagnostic or other medical purposes.
St John's Laboratory Ltd, Knowledge Dock Business Centre, University Way, London, E16 2RD | Tel: 0208 223 3081