

Anti-TAS2R1 antibody (20-100 N-Term) (STJ95868)

STJ95868

GENERAL INFORMATION

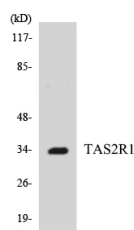
Product Type	Primary antibodies
Short Description	Rabbit polyclonal antibody anti-Taste Receptor Type 2 Member 1 (20-100 N-Term) is suitable for use in Western Blot, Immunofluorescence, Immunocytochemistry and ELISA research applications.
Applications	WB, IF, ICC, ELISA
Host/Source	Rabbit
Reactivity	Human, Rat, Mouse

PRODUCT PROPERTIES

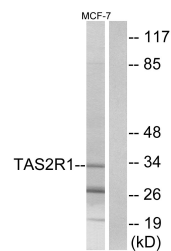
Clonality	Polyclonal
Clone ID	
Concentration	1 mg/mL
Conjugation	Unconjugated
Purification	The antibody was affinity-purified from rabbit anti-serum by affinity-chromatography.
Dilution Range	WB 1:500-1:2000 IF 1:200-1:1000 ELISA 1:20000
Formulation	PBS, 50% Glycerol, 0.5% BSA and 0.02% Sodium Azide.
Isotype	IgG
Storage Instruction	Store at -20°C for up to 1 year from the date of receipt, and avoid repeat freeze-thaw cycles.

TARGET INFORMATION

Gene ID	50834
Gene Symbol	TAS2R1
Uniprot ID	TA2R1_HUMAN
Immunogen	The antiserum was produced against synthesized peptide derived from human TAS2R1 at amino acid range 6-55
Immunogen Region	20-100 N-Term
Specificity	TAS2R1 polyclonal antibody (Taste Receptor Type 2 Member 1) binds to endogenous Taste Receptor Type 2 Member 1 at the amino acid region 20-100 N-Term.
Immunogen Sequence	



Western blot analysis of the lysates from K562 cells using TAS2R1 antibody.



Western blot analysis of lysates from MCF-7 cells, using TAS2R1 Antibody. The lane on the right is blocked with the synthesized peptide.

This product is suitable for in-vitro studies under the RESEARCH USE ONLY [RUO] licence. This product must not be used as for diagnostic or other medical purposes.
St John's Laboratory Ltd, Knowledge Dock Business Centre, University Way, London, E16 2RD | Tel: 0208 223 3081