

## Anti-TAS1R3 antibody (300-380 Internal) (STJ95867)

STJ95867

### GENERAL INFORMATION

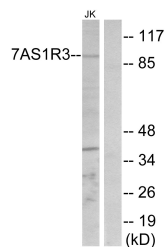
<b>Product Type</b>	Primary antibodies
<b>Short Description</b>	Rabbit polyclonal antibody anti-Taste Receptor Type 1 Member 3 (300-380 Internal) is suitable for use in Western Blot, Immunofluorescence, Immunocytochemistry and ELISA research applications.
<b>Applications</b>	WB, IF, ICC, ELISA
<b>Host/Source</b>	Rabbit
<b>Reactivity</b>	Human, Rat, Mouse

### PRODUCT PROPERTIES

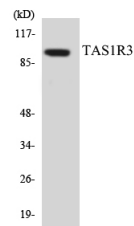
<b>Clonality</b>	Polyclonal
<b>Clone ID</b>	
<b>Concentration</b>	1 mg/mL
<b>Conjugation</b>	Unconjugated
<b>Purification</b>	The antibody was affinity-purified from rabbit anti-serum by affinity-chromatography.
<b>Dilution Range</b>	WB 1:500-1:2000 IF 1:200-1:1000 ELISA 1:10000
<b>Formulation</b>	PBS, 50% Glycerol, 0.5% BSA and 0.02% Sodium Azide.
<b>Isotype</b>	IgG
<b>Storage Instruction</b>	Store at -20°C for up to 1 year from the date of receipt, and avoid repeat freeze-thaw cycles.

### TARGET INFORMATION

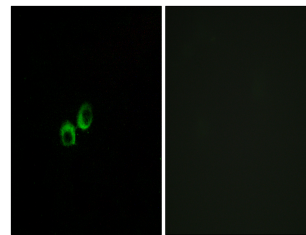
<b>Gene ID</b>	83756
<b>Gene Symbol</b>	TAS1R3
<b>Uniprot ID</b>	TS1R3_HUMAN
<b>Immunogen</b>	The antiserum was produced against synthesized peptide derived from human TAS1R3 at amino acid range 326-375
<b>Immunogen Region</b>	300-380 Internal
<b>Specificity</b>	TAS1R3 polyclonal antibody (Taste Receptor Type 1 Member 3) binds to endogenous Taste Receptor Type 1 Member 3 at the amino acid region 300-380 Internal.
<b>Immunogen Sequence</b>	



Western blot analysis of lysates from Jurkat cells, using TAS1R3 Antibody. The lane on the right is blocked with the synthesized peptide.



Western blot analysis of the lysates from HeLa cells using TAS1R3 antibody.



Immunofluorescence analysis of MCF7 cells, using TAS1R3 Antibody. The picture on the right is blocked with the synthesized peptide.