

Anti-SNCAIP antibody (C-Term) (STJ95857)

STJ95857

GENERAL INFORMATION

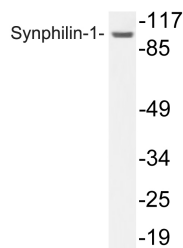
Product Type	Primary antibodies
Short Description	Rabbit polyclonal antibody anti-Synphilin-1 (C-Term) is suitable for use in Western Blot, Immunohistochemistry, Immunofluorescence and ELISA research applications.
Applications	WB, IHC-P, IF-P, ELISA
Host/Source	Rabbit
Reactivity	Human, Mouse

PRODUCT PROPERTIES

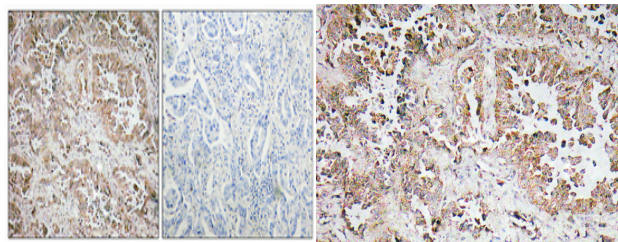
Clonality	Polyclonal
Clone ID	
Concentration	1 mg/mL
Conjugation	Unconjugated
Purification	The antibody was affinity-purified from rabbit anti-serum by affinity-chromatography.
Dilution Range	WB 1:500-1:2000 IHC 1:100-1:300 ELISA 1:10000
Formulation	PBS, 50% Glycerol, 0.5% BSA and 0.02% Sodium Azide.
Isotype	IgG
Storage Instruction	Store at -20°C for up to 1 year from the date of receipt, and avoid repeat freeze-thaw cycles.

TARGET INFORMATION

Gene ID	9627
Gene Symbol	SNCAIP
Uniprot ID	SNCAP_HUMAN
Immunogen	The antiserum was produced against synthesized peptide derived from human Synphilin-1 at amino acid range 797-846
Immunogen Region	C-Term
Specificity	SNCAIP polyclonal antibody (Synphilin-1) binds to endogenous Synphilin-1 at the amino acid region C-Term.
Immunogen Sequence	

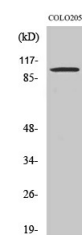


Western blot analysis of lysate from COLO205, using Synphilin-1 antibody.



Immunohistochemical analysis of paraffin-embedded Human lung cancer. Antibody was diluted at 1:100 (4°C overnight). High-pressure and temperature Tris-EDTA, pH8.0 was used for antigen retrieval. Negative control (right) obtained from antibody was pre-absorbed by immunogen peptide.

Immunohistochemistry analysis of Synphilin-1 antibody in paraffin-embedded lung carcinoma tissue.



Western blot analysis of various cells using Synphilin-1 Polyclonal Antibody