

## Anti-SYT11 antibody (150-230 Internal) (STJ95852)

STJ95852

### GENERAL INFORMATION

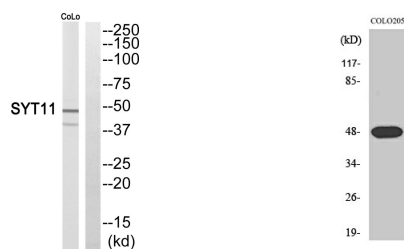
<b>Product Type</b>	Primary antibodies
<b>Short Description</b>	Rabbit polyclonal antibody anti-Synaptotagmin-11 (150-230 Internal) is suitable for use in Western Blot and ELISA research applications.
<b>Applications</b>	WB, ELISA
<b>Host/Source</b>	Rabbit
<b>Reactivity</b>	Human, Mouse, Rat

### PRODUCT PROPERTIES

<b>Clonality</b>	Polyclonal
<b>Clone ID</b>	
<b>Concentration</b>	1 mg/mL
<b>Conjugation</b>	Unconjugated
<b>Purification</b>	The antibody was affinity-purified from rabbit anti-serum by affinity-chromatography.
<b>Dilution Range</b>	WB 1:500-1:2000 ELISA 1:10000
<b>Formulation</b>	PBS, 50% Glycerol, 0.5% BSA and 0.02% Sodium Azide.
<b>Isotype</b>	IgG
<b>Storage Instruction</b>	Store at -20°C for up to 1 year from the date of receipt, and avoid repeat freeze-thaw cycles.

### TARGET INFORMATION

<b>Gene ID</b>	23208
<b>Gene Symbol</b>	SYT11
<b>Uniprot ID</b>	SYT11_HUMAN
<b>Immunogen</b>	The antiserum was produced against synthesized peptide derived from human SYT11 at amino acid range 181-230
<b>Immunogen Region</b>	150-230 Internal
<b>Specificity</b>	SYT11 polyclonal antibody (Synaptotagmin-11) binds to endogenous Synaptotagmin-11 at the amino acid region 150-230 Internal.
<b>Immunogen Sequence</b>	



Western blot analysis of SYT11 Antibody. The lane on the right is blocked with the SYT11 peptide.

Western blot analysis of various cells using Synaptotagmin XI Polyclonal Antibody

This product is suitable for in-vitro studies under the RESEARCH USE ONLY [RUO] licence. This product must not be used as for diagnostic or other medical purposes.  
St John's Laboratory Ltd, Knowledge Dock Business Centre, University Way, London, E16 2RD | Tel: 0208 223 3081