

Anti-SFSWAP antibody (180-260 Internal) (STJ95840)

STJ95840

GENERAL INFORMATION

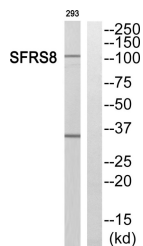
Product Type	Primary antibodies
Short Description	Rabbit polyclonal antibody anti-Splicing Factor-Suppressor Of White-Apricot Homolog (180-260 Internal) is suitable for use in Western Blot and ELISA research applications.
Applications	WB, ELISA
Host/Source	Rabbit
Reactivity	Human, Rat, Mouse

PRODUCT PROPERTIES

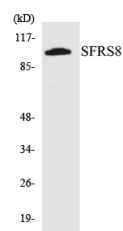
Clonality	Polyclonal
Clone ID	
Concentration	1 mg/mL
Conjugation	Unconjugated
Purification	The antibody was affinity-purified from rabbit anti-serum by affinity-chromatography.
Dilution	WB 1:500-1:2000
Range	ELISA 1:20000
Formulation	PBS, 50% Glycerol, 0.5% BSA and 0.02% Sodium Azide.
Isotype	IgG
Storage	Store at -20°C for up to 1 year from the date of receipt, and avoid repeat freeze-thaw cycles.
Instruction	

TARGET INFORMATION

Gene ID	6433
Gene Symbol	SFSWAP
Uniprot ID	SFSWA_HUMAN
Immunogen	The antiserum was produced against synthesized peptide derived from human SFRS8 at amino acid range 201-250
Immunogen Region	180-260 Internal
Specificity	SFSWAP polyclonal antibody (Splicing Factor-Suppressor Of White-Apricot Homolog) binds to endogenous Splicing Factor-Suppressor Of White-Apricot Homolog at the amino acid region 180-260 Internal.
Immunogen Sequence	



Western blot analysis of SFRS8 Antibody. The lane on the right is blocked with the SFRS8 peptide.



Western blot analysis of the lysates from 293 cells using SFRS8 antibody.



Western blot analysis of various cells using SWAP Polyclonal Antibody cells nucleus extracted by Minute TM Cytoplasmic and Nuclear Fractionation kit (SC-003, Inventibiotech, MN, USA).

This product is suitable for in-vitro studies under the RESEARCH USE ONLY [RUO] licence. This product must not be used as for diagnostic or other medical purposes.
 St John's Laboratory Ltd, Knowledge Dock Business Centre, University Way, London, E16 2RD | Tel: 0208 223 3081