

Anti-SVOP antibody (240-320 Internal) (STJ95839)

STJ95839

GENERAL INFORMATION

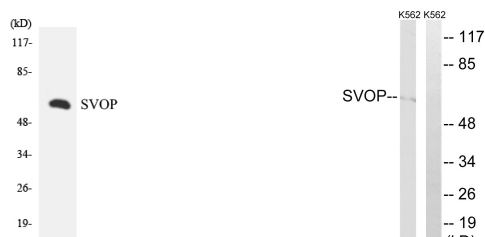
Product Type	Primary antibodies
Short Description	Rabbit polyclonal antibody anti-Synaptic Vesicle 2-Related Protein (240-320 Internal) is suitable for use in Western Blot, Immunohistochemistry, Immunofluorescence and ELISA research applications.
Applications	WB, IHC-P, IF-P, ELISA
Host/Source	Rabbit
Reactivity	Human, Mouse, Rat

PRODUCT PROPERTIES

Clonality	Polyclonal
Clone ID	
Concentration	1 mg/mL
Conjugation	Unconjugated
Purification	The antibody was affinity-purified from rabbit anti-serum by affinity-chromatography.
Dilution Range	WB 1:500-1:2000 IHC 1:100-1:300 ELISA 1:40000
Formulation	PBS, 50% Glycerol, 0.5% BSA and 0.02% Sodium Azide.
Isotype	IgG
Storage Instruction	Store at -20°C for up to 1 year from the date of receipt, and avoid repeat freeze-thaw cycles.

TARGET INFORMATION

Gene ID	55530
Gene Symbol	SVOP
Uniprot ID	SVOP_HUMAN
Immunogen Region	The antiserum was produced against synthesized peptide derived from human SVOP at amino acid range 271-320
Immunogen Region	240-320 Internal
Specificity	SVOP polyclonal antibody (Synaptic Vesicle 2-Related Protein) binds to endogenous Synaptic Vesicle 2-Related Protein at the amino acid region 240-320 Internal.
Immunogen Sequence	



Western blot analysis of the lysates from Jurkat cells using SVOP antibody.

Western blot analysis of lysates from K562 cells, using SVOP Antibody. The lane on the right is blocked with the synthesized peptide.

This product is suitable for in-vitro studies under the RESEARCH USE ONLY [RUO] licence. This product must not be used as for diagnostic or other medical purposes.
St John's Laboratory Ltd, Knowledge Dock Business Centre, University Way, London, E16 2RD | Tel: 0208 223 3081